



WWW.CC3DPROJECTS.COM

BAMBU LAB H Series – SINGLE PIPE

A SMART, BUDGET-FRIENDLY WAY TO MANAGE PURGE WASTE FROM YOUR 3D PRINTER—WITHOUT BUYING DRAWERS OR INSTALLING COMPLEX MODS.

THIS SOLUTION ALLOWS YOU TO RUN LONG MULTICOLOR PRINTS WITHOUT WORRYING ABOUT PURGE DISCHARGE. ALL WASTE IS EFFICIENTLY GUIDED THROUGH THE PIPE AND COLLECTED DIRECTLY INTO A TRASH BIN POSITIONED UNDERNEATH.

NO COMPLICATED UPGRADES. NO EXPENSIVE ADD-ONS. JUST A CLEAN, PRACTICAL, AND EFFECTIVE SYSTEM THAT KEEPS YOUR WORKSPACE ORGANIZED AND YOUR PRINTER RUNNING SMOOTHLY.

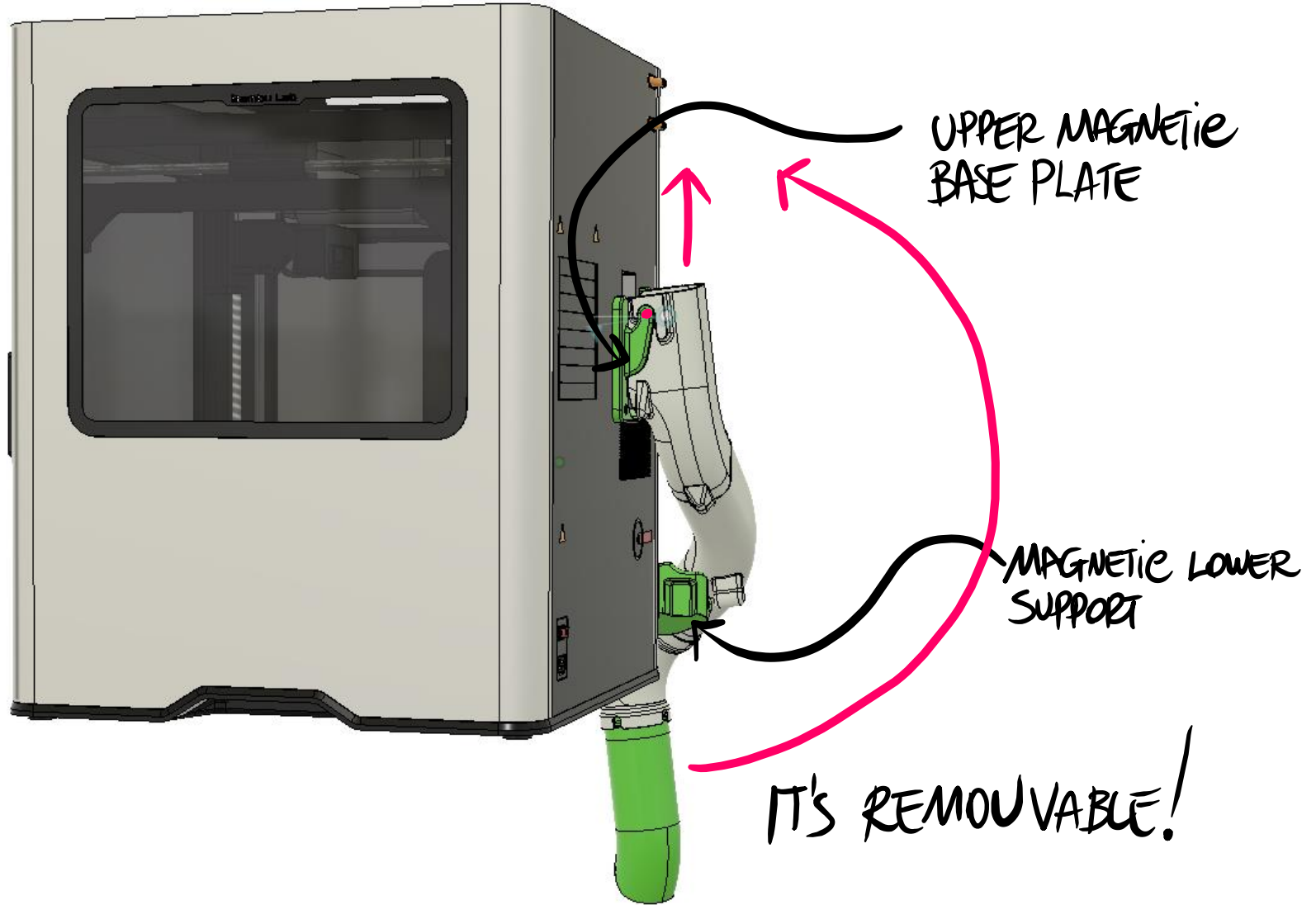
PERFECT FOR MAKERS WHO WANT A RELIABLE WASTE MANAGEMENT SETUP WITH MINIMAL COST AND ZERO HASSLE.



BAMBU LAB H SERIES SINGLE PIPE

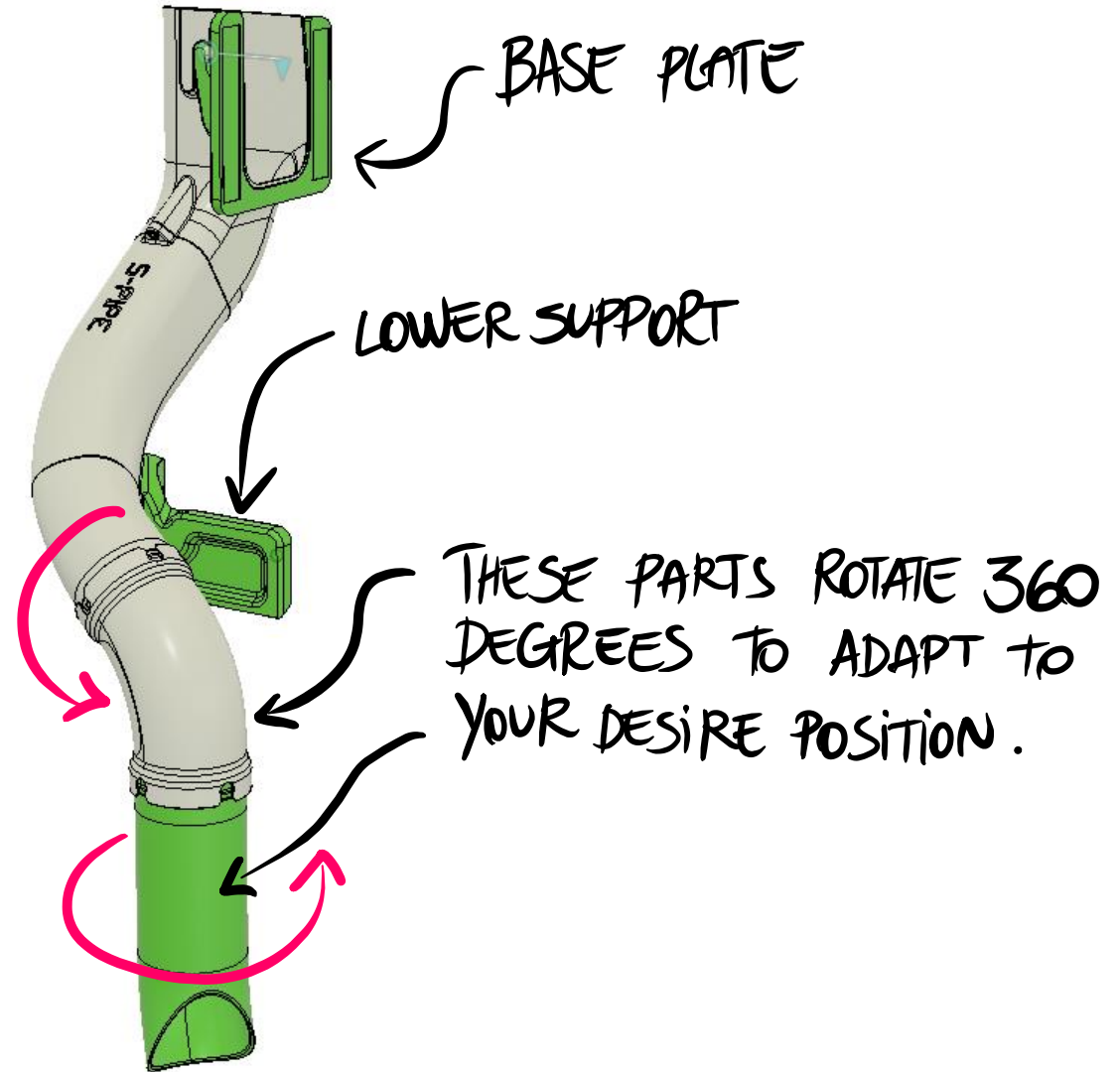
KEY CARATERISTICS

BAMBU H SERIES SINGLE PIPE



KEY CHARACTERISTICS

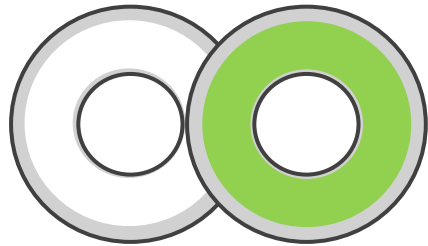
BAMBU H SERIES SINGLE PIPE



B.O.M.

FILAMENTS

PETG PETG



410G 180G

PRINT TIME

6H 27M

REQUIRED HARDWARE:



SCREW M4 x 14mm 2 UNITS



MAGNET 8x2mm 6 UNITS

DOUBLE SIDE TAPE 30cm
20mm x 2mm



FOLLOW THESE SIMPLE TIPS AND YOU'RE GOLDEN:

1. STICK WITH REGULAR PETG

USE STANDARD PETG, AND SKIP THE HIGH FLOW (HF) STUFF. HF MIGHT SOUND COOL, BUT IT CAN'T HANDLE HEAT AS WELL, AND THAT CAN MESS WITH YOUR PRINT'S DURABILITY. YEAH, REGULAR PETG IS SHINIER — I GET IT — BUT HERE'S A TRICK: SPRAY IT WITH A MATTE CLEAR COAT LIKE I DID. BOOM! PROBLEM SOLVED.

2. DON'T USE PLA FOR SUPPORTS

IF YOU ARE USING A SINGLE NOZZLE PRINTER WITH A COLOR CHANGE SYSTEM, VOID USING PLA AS SUPPORT MATERIAL. SERIOUSLY. EVEN IF YOU SWITCH FILAMENTS, LEFTOVER PLA IN THE NOZZLE CAN MESS WITH LAYER ADHESION, AND THAT'S NO FUN. AND DON'T STRESS — THE SUPPORTS COME OFF EASY, I PROMISE. **YOU GOT THIS.**

3. KEEP IT SLOW AND STEADY

RESIST THE URGE TO CRANK UP THE PRINT SPEED. GOING TOO FAST CAN LEAD TO WEIRD-LOOKING CORNERS AND WARPED PARTS. STICK TO STANDARD SPEED — YOUR PRINT WILL THANK YOU.

WWW.CC3DPROJECTS.COM

4. USE A GRIPPY PRINT BED

THESE PARTS ARE ON THE BIGGER SIDE, SO BED ADHESION IS EVERYTHING. MAKE SURE YOUR BUILD PLATE'S GOT A GOOD GRIP TO AVOID WARPING OR LIFTING. TRUST ME, A SOLID FIRST LAYER MAKES ALL THE DIFFERENCE.

SLICER PRINT SETTINGS:

WALL LOOPS = 2
TOP SHELL = 2
BOTTOM SHELL = 2

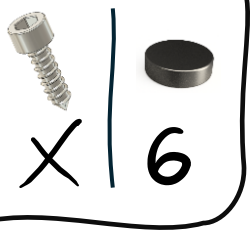
SPARSE INFILL = 9%
INFILL PATTERN = GYROID

SUPPORT TYPE = TREE OR NORMAL/MIXED

DIFFERENT PARTS = DIFFERENT STRENGTH

(PERIMETERS, INFILL AND SUPPORTS MIGHT VARY, HOWEVER, ALL THE PROPER CONFIGURATIONS SHOULD BE INCLUDED IN THE PRINT FILE!)



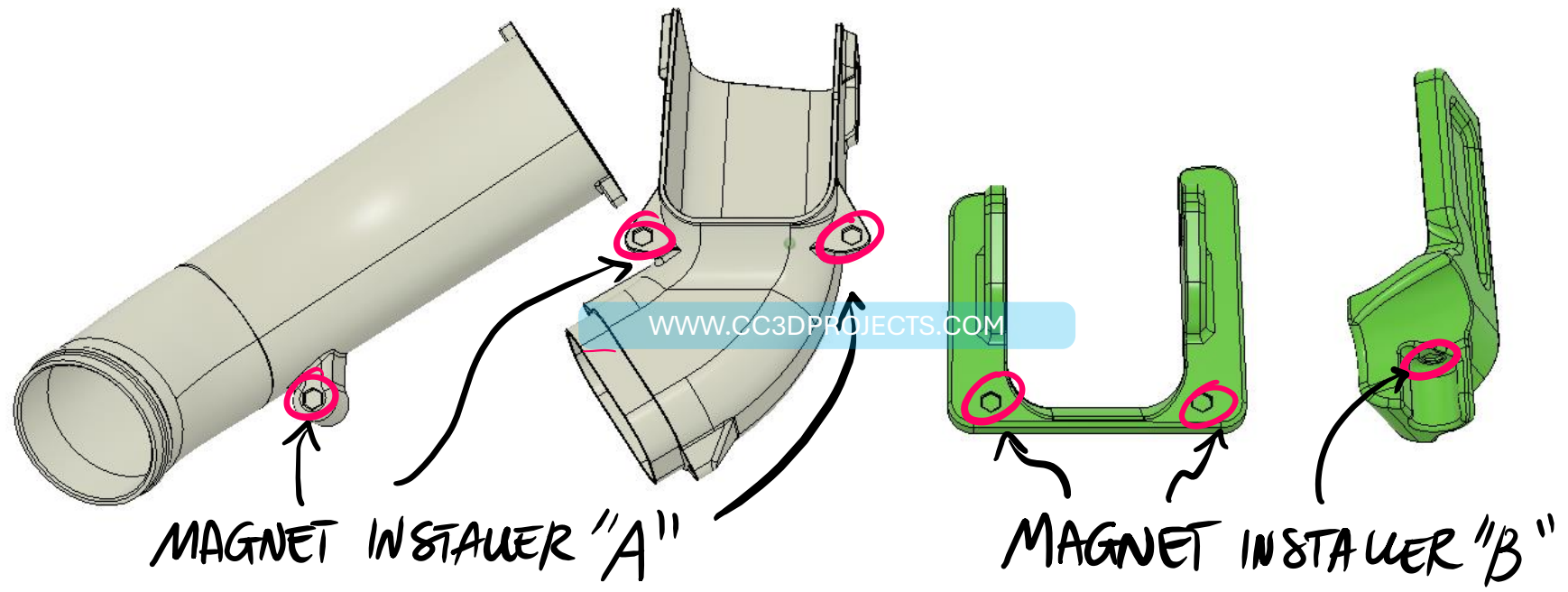


PIPE PREPARATION

BAMBU H SERIES SINGLE PIPE



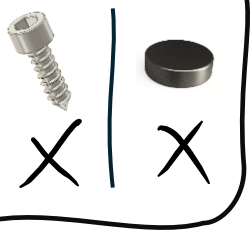
LET'S START GLUING THE MAGNETS FIRST!



AS ALWAYS, YOU CAN DOWNLOAD THE MAGNET INSTALLERS FOR FREE FROM MY SHOP.



ALL MATERIAL PRODUCED AND PROVIDED HAS BEEN CONCEIVED, AUTHORED AND PRODUCED BY ENRICO MAZZAROL - ALL RIGHTS RESERVED.

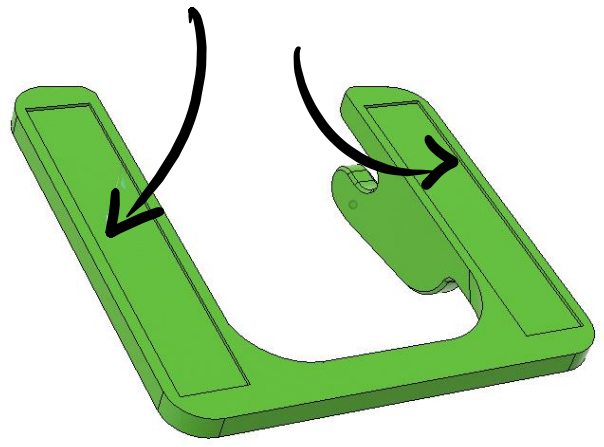


PIPE PREPARATION

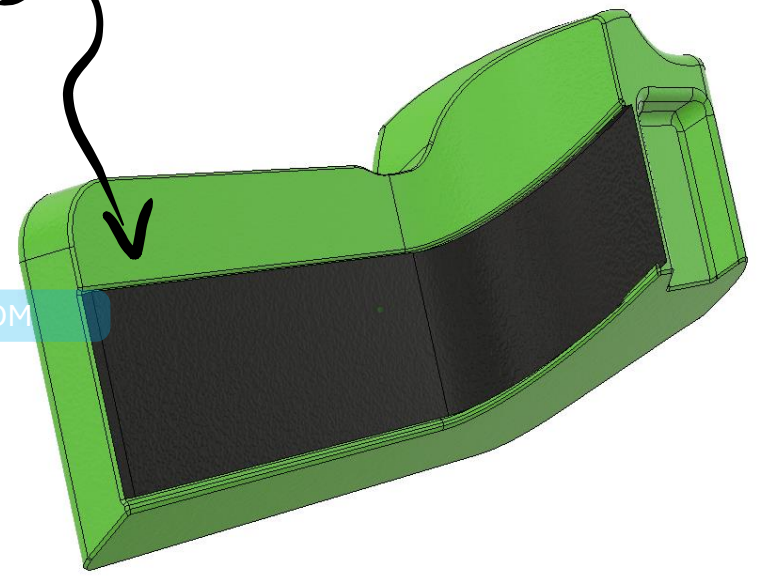
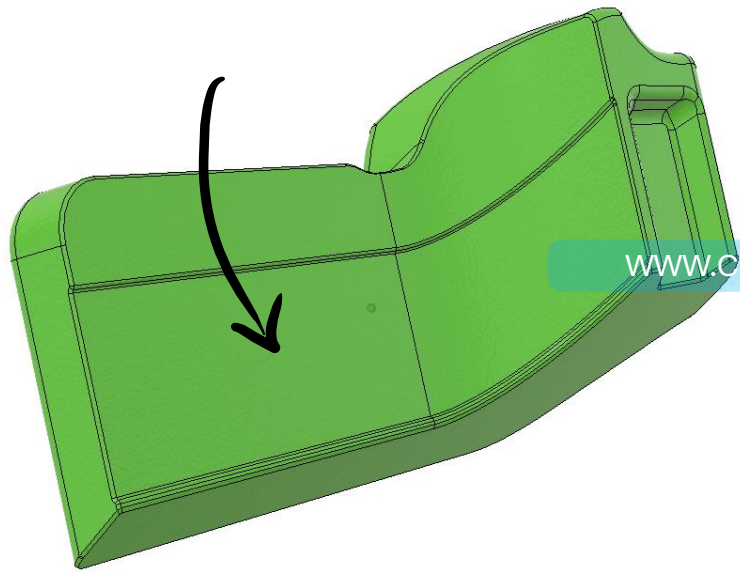
BAMBU H SERIES SINGLE PIPE



NOW IT'S TIME FOR THE DOUBLE SIDE TAPE



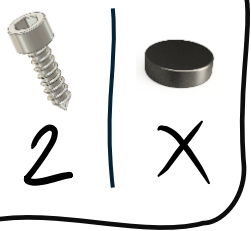
LIKE THIS



WWW.CC3DPROJECTS.COM



ALL MATERIAL PRODUCED AND PROVIDED HAS BEEN CONCEIVED, AUTHORED AND PRODUCED BY ENRICO MAZZAROL - ALL RIGHTS RESERVED.



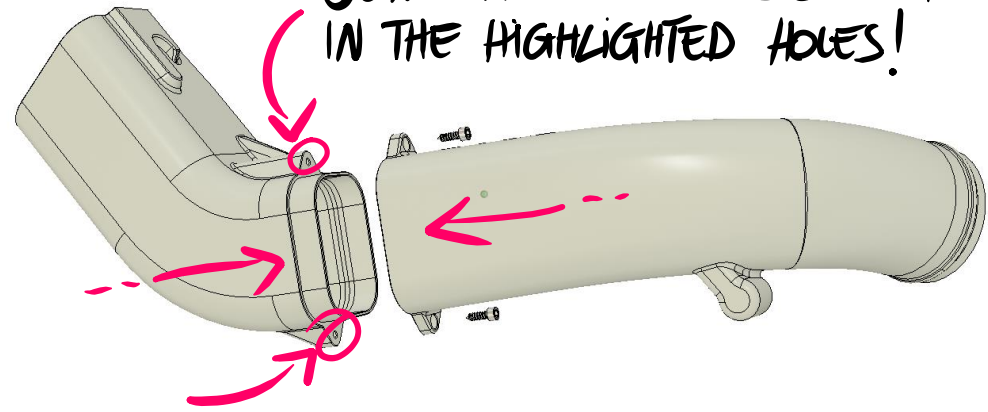
PIPE ASSEMBLY

BAMBU H SERIES SINGLE PIPE

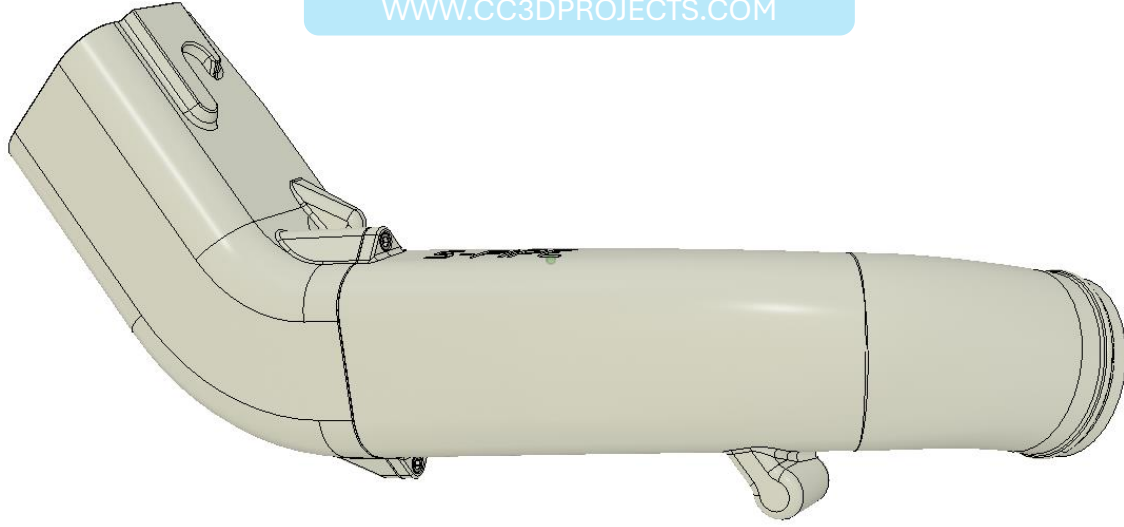


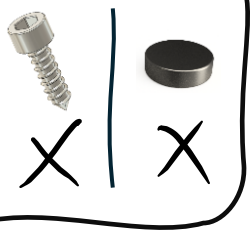
NOW IT'S TIME FOR THE MAIN PIPE...

JOIN THE TWO PIECES USING THE SCREWS IN THE HIGHLIGHTED HOLES!



WWW.CC3DPROJECTS.COM



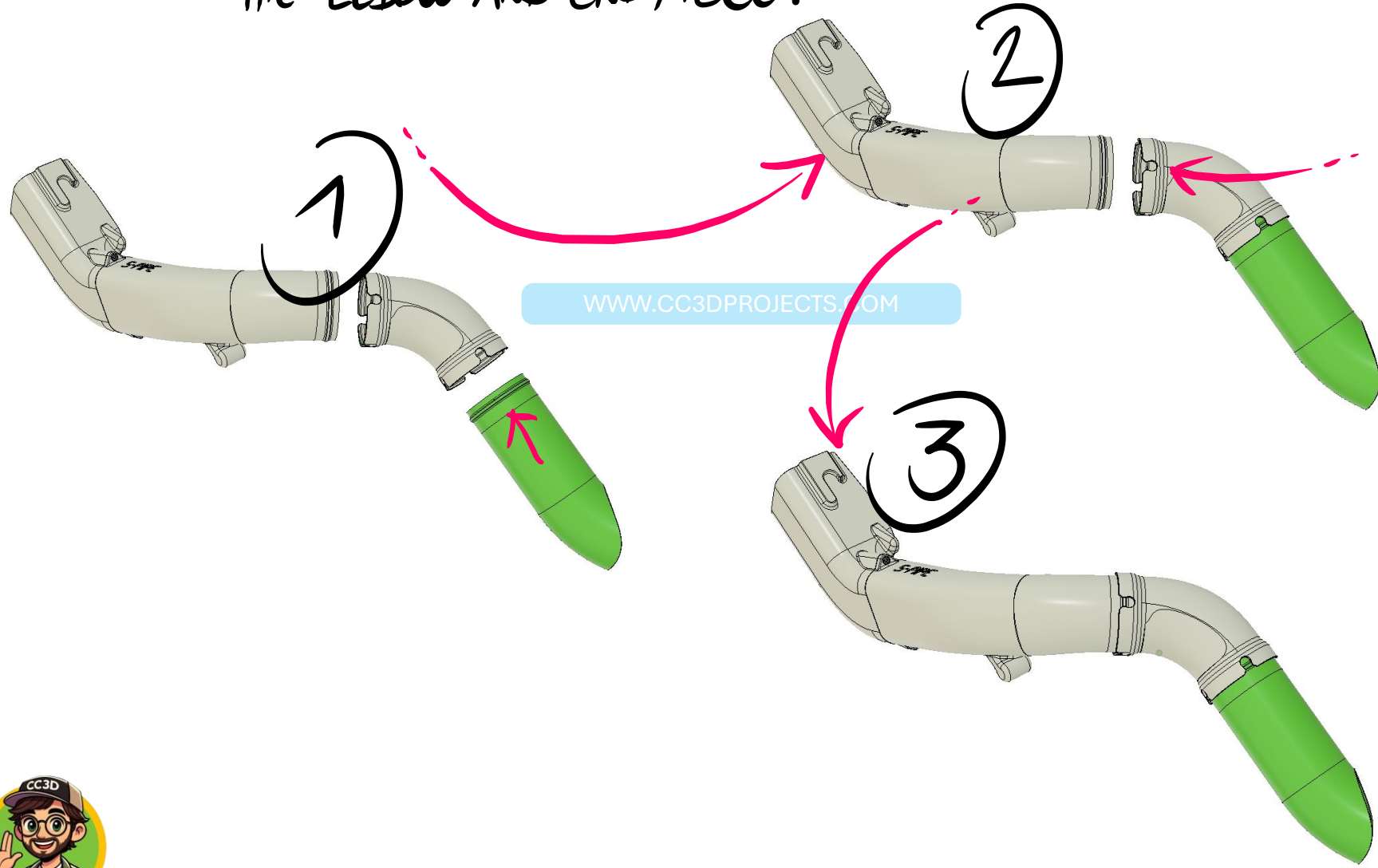


PIPE ASSEMBLY

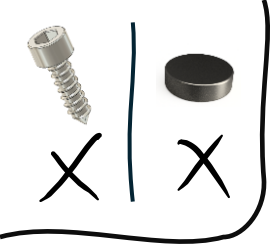
BAMBU H SERIES SINGLE PIPE



LET'S ASSEMBLE THE COMPLETE PIPE, INCLUDING THE ELBOW AND END PIECE.



ALL MATERIAL PRODUCED AND PROVIDED HAS BEEN CONCEIVED, AUTHORED AND PRODUCED BY ENRICO MAZZAROL - ALL RIGHTS RESERVED.



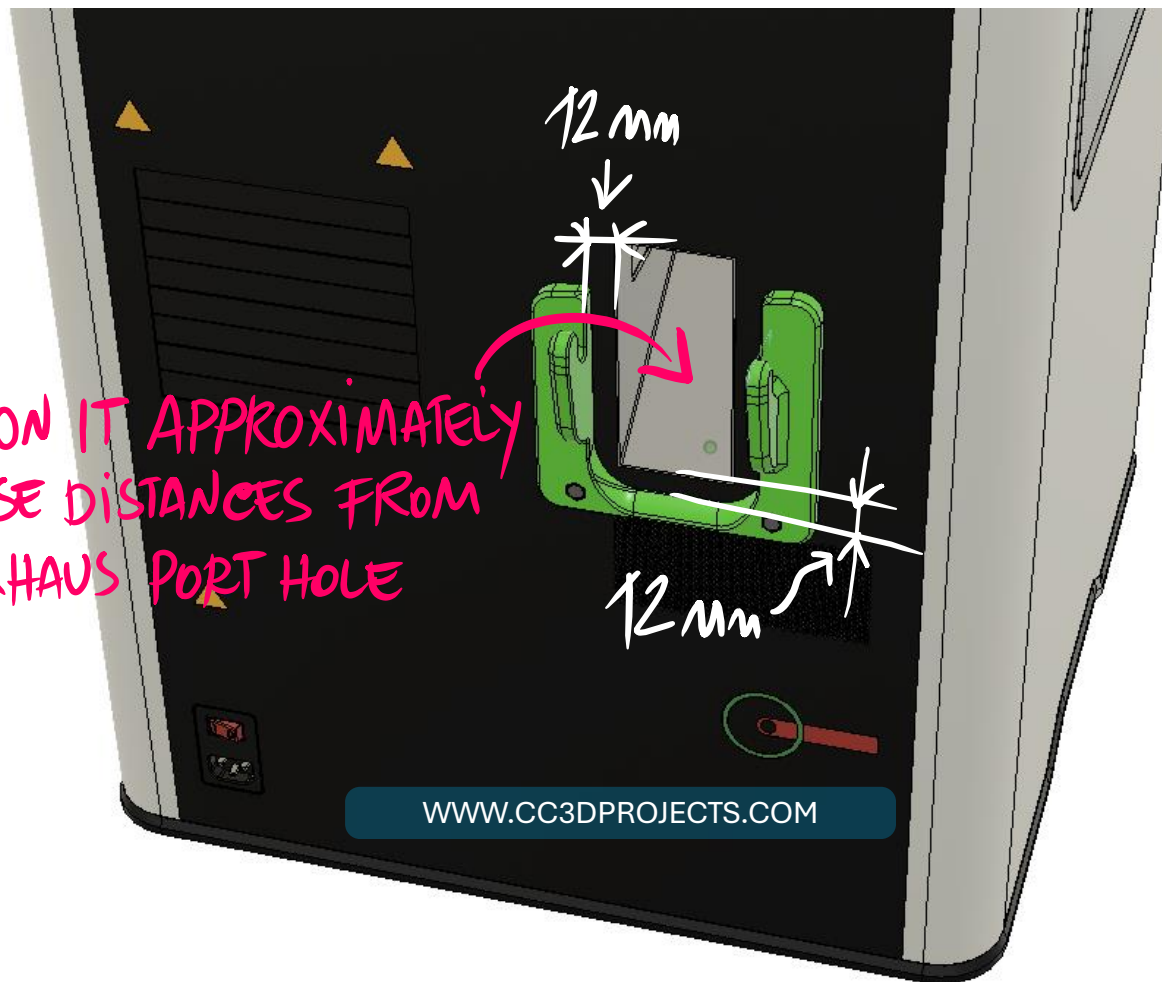
PIPE ASSEMBLY

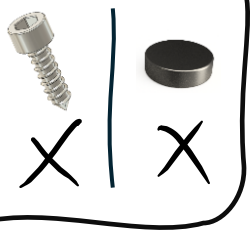
BAMBU H SERIES SINGLE PIPE



LET'S ATTACH THE BASE PLATE TO THE PRINTER.

POSITION IT APPROXIMATELY
AT THESE DISTANCES FROM
THE EXHAUS PORT HOLE



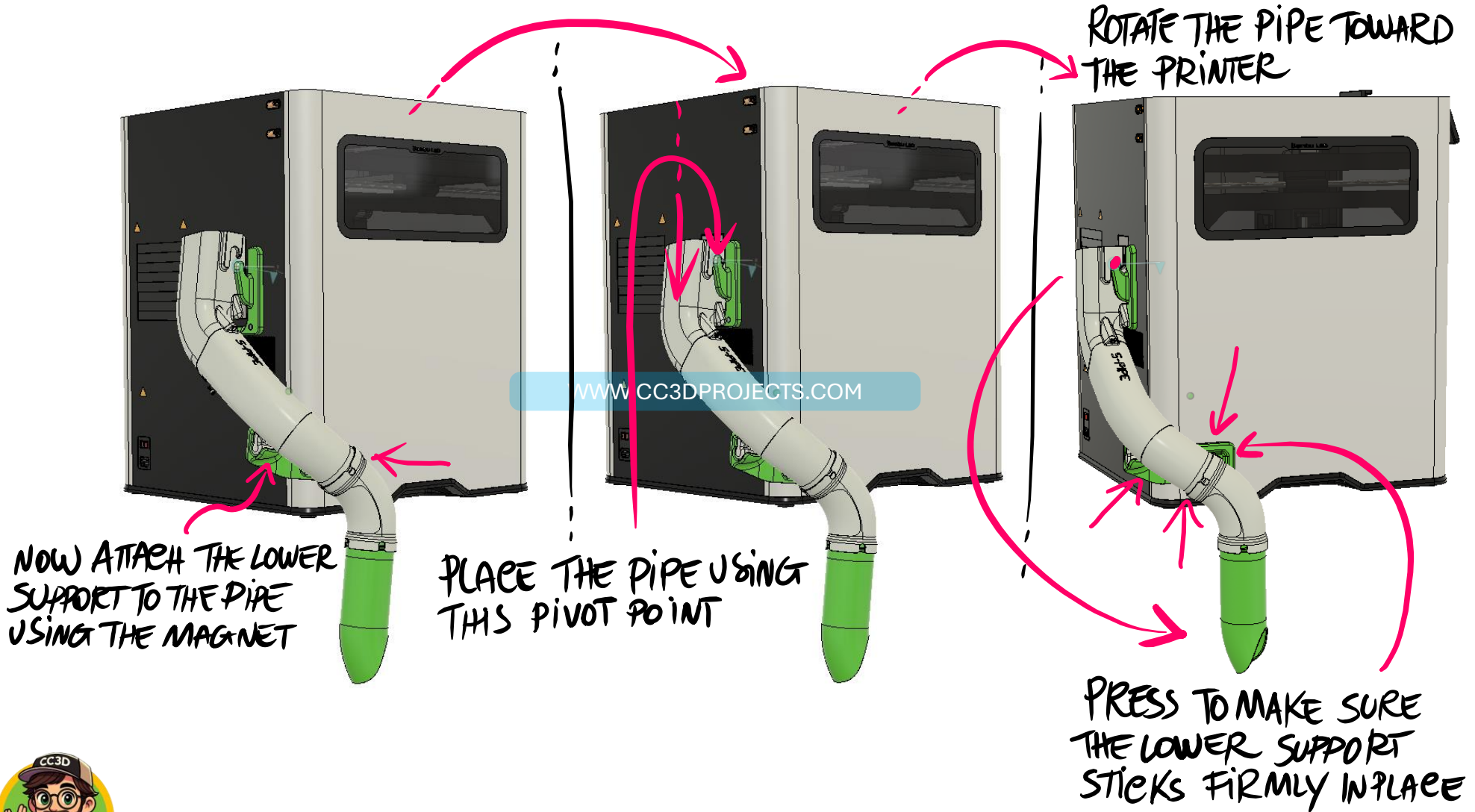


PIPE ASSEMBLY

BAMBU H SERIES SINGLE PIPE



LET'S FINISH ATTACHING THE LOWER PIPE SUPPORT



ALL MATERIAL PRODUCED AND PROVIDED HAS BEEN CONCEIVED, AUTHORED AND PRODUCED BY ENRICO MAZZAROL - ALL RIGHTS RESERVED.

ALRIGHT, LOOK LIKE YOU MADE IT TO THE END!
 BUUT, IF YOUR RESULT DOESN'T LOOKS KINDA LIKE THIS...
 ... MY FRIEND ...

WHAT ARE YOU DOING WITH YOUR LIFE? 😊
 SERIOUSLY THOUGH ...

JUST HIT ME UP, WE'LL FIGURE OUT
 WHAT WENT WRONG!!

BUT

WWW.CC3DPROJECTS.COM

IF YOU ARE PROUD OF WHAT YOU BUILD
 (AND YOU SHOULD BE) ...

... WELL ...

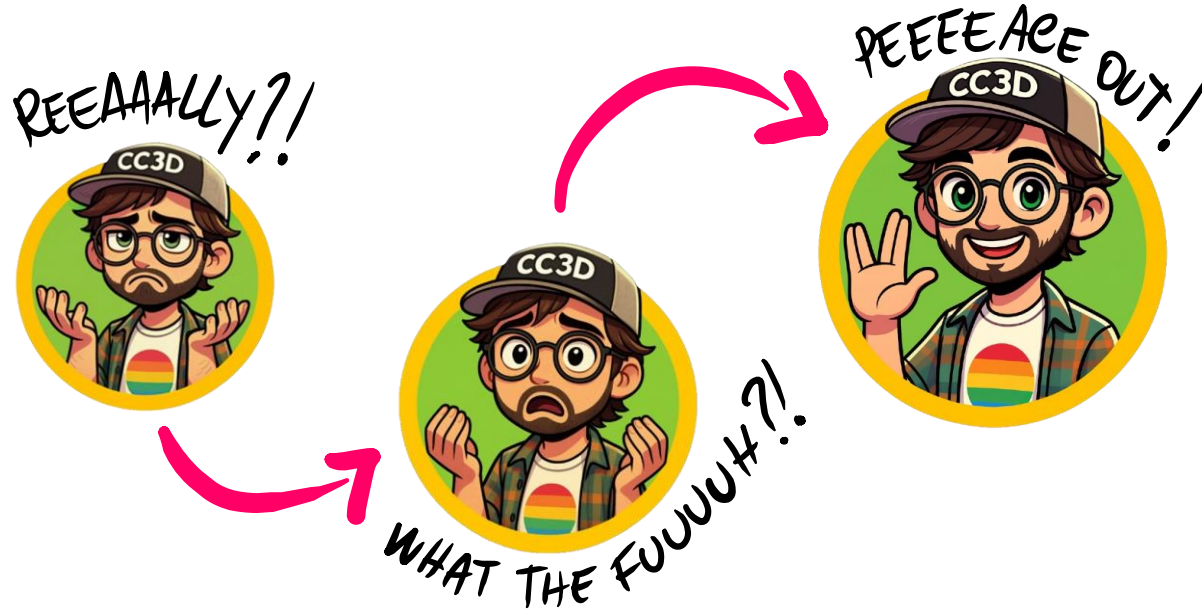
... HOW ABOUT SNAPPING A COUPLE
 OF PICS AND TOSSING THEM ONLINE?

MAYBE TAGGING ME?

#CC3DPROJECTS

THANKS
 Enrico

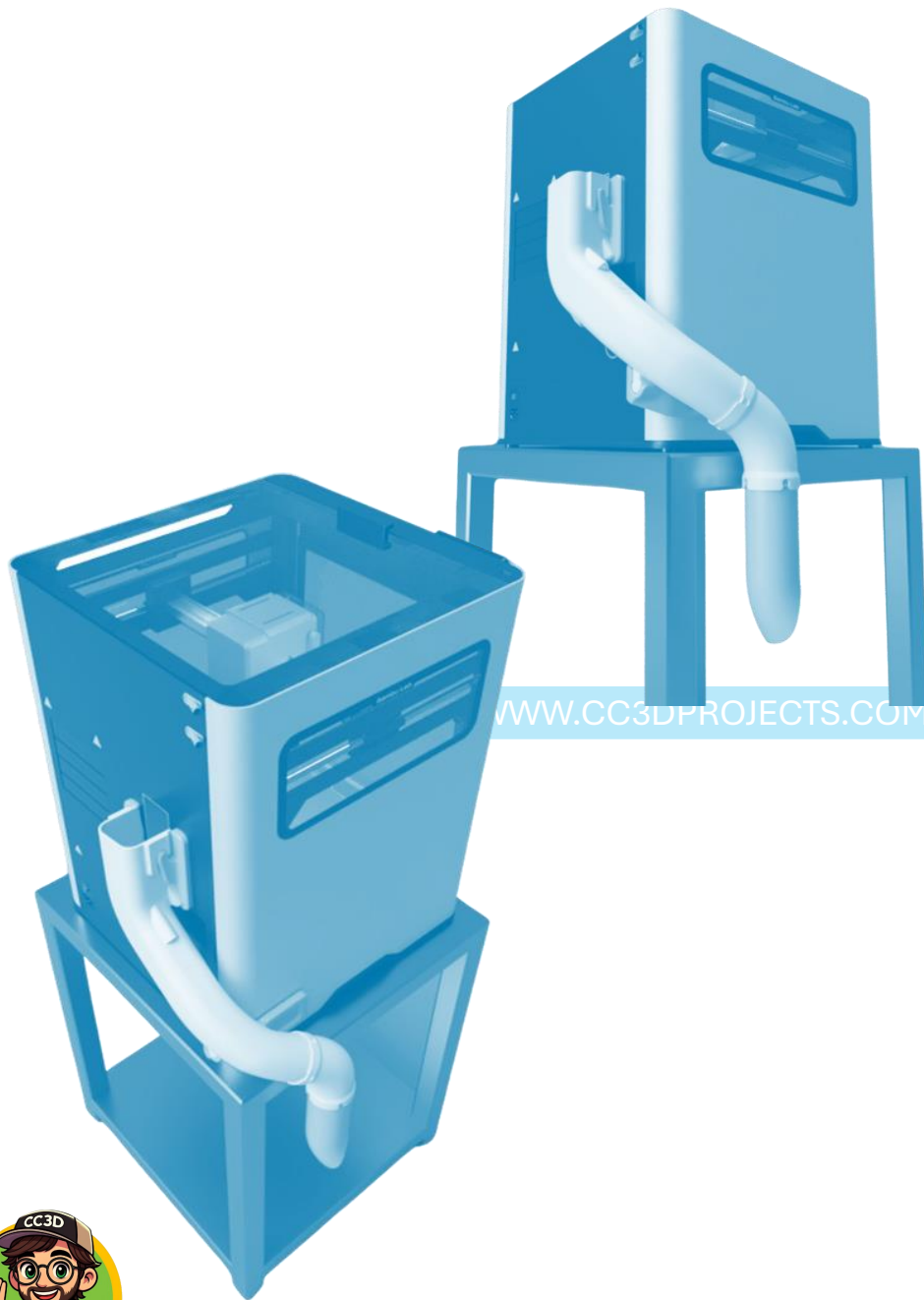




THANKS FOR STICKING WITH ME THROUGH THIS ASSEMBLY GUIDE
IT TOOK ME HOURS TO PUT THIS GUIDE TOGETHER, I TRULY HOPE YOU LIKE IT!
IF THERE'S ANYTHING I CAN DO BETTER, PLEASE LET ME KNOW!
I'M ALWAYS HERE TO HELP AND IMPROVE MY WORK AND MY MODELS!

CIAO
Enrico





WWW.CC3DPROJECTS.COM

© 2025 CC3DPROJECTS. ALL RIGHTS RESERVED.

THIS MANUAL IS PROTECTED BY COPYRIGHT LAW AND MAY NOT BE REPRODUCED, DISTRIBUTED, OR USED IN WHOLE OR IN PART WITHOUT THE WRITTEN PERMISSION OF THE AUTHOR OR PUBLISHER. ANY VIOLATION WILL BE PROSECUTED TO THE FULLEST EXTENT OF THE LAW.

THE SINGLE PIPE AND ALL ITS COMPONENTS, INCLUDING BUT NOT LIMITED TO DESIGNS, SCHEMATICS, ASSEMBLY INSTRUCTIONS, AND PHOTOGRAPHS, ARE THE EXCLUSIVE PROPERTY OF ENRICO MAZZAROL AND ARE PROTECTED BY COPYRIGHT LAW AND OTHER INTELLECTUAL PROPERTY LAWS.

COPYING, DISTRIBUTING, MODIFYING, REPRODUCING, TRANSMITTING, OR USING THE HDRY SYSTEM IN ANY FORM WITHOUT THE WRITTEN PERMISSION OF CC3DPROJECTS IS PROHIBITED.

FOR USAGE REQUESTS, PERMISSIONS, OR OTHER INQUIRIES, PLEASE CONTACT CC3DPROJECT@GMAIL.COM.

