



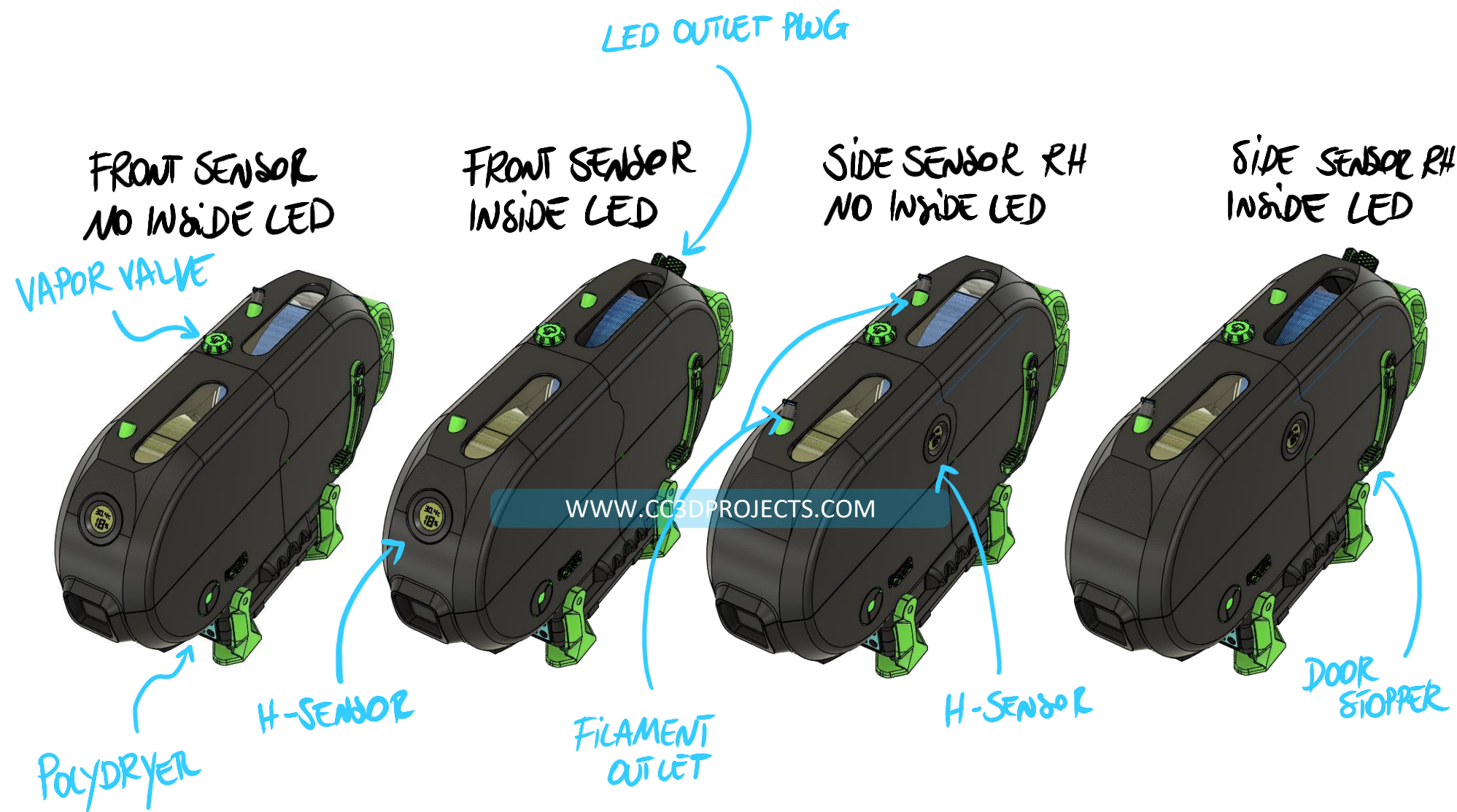
SPOOLBOX

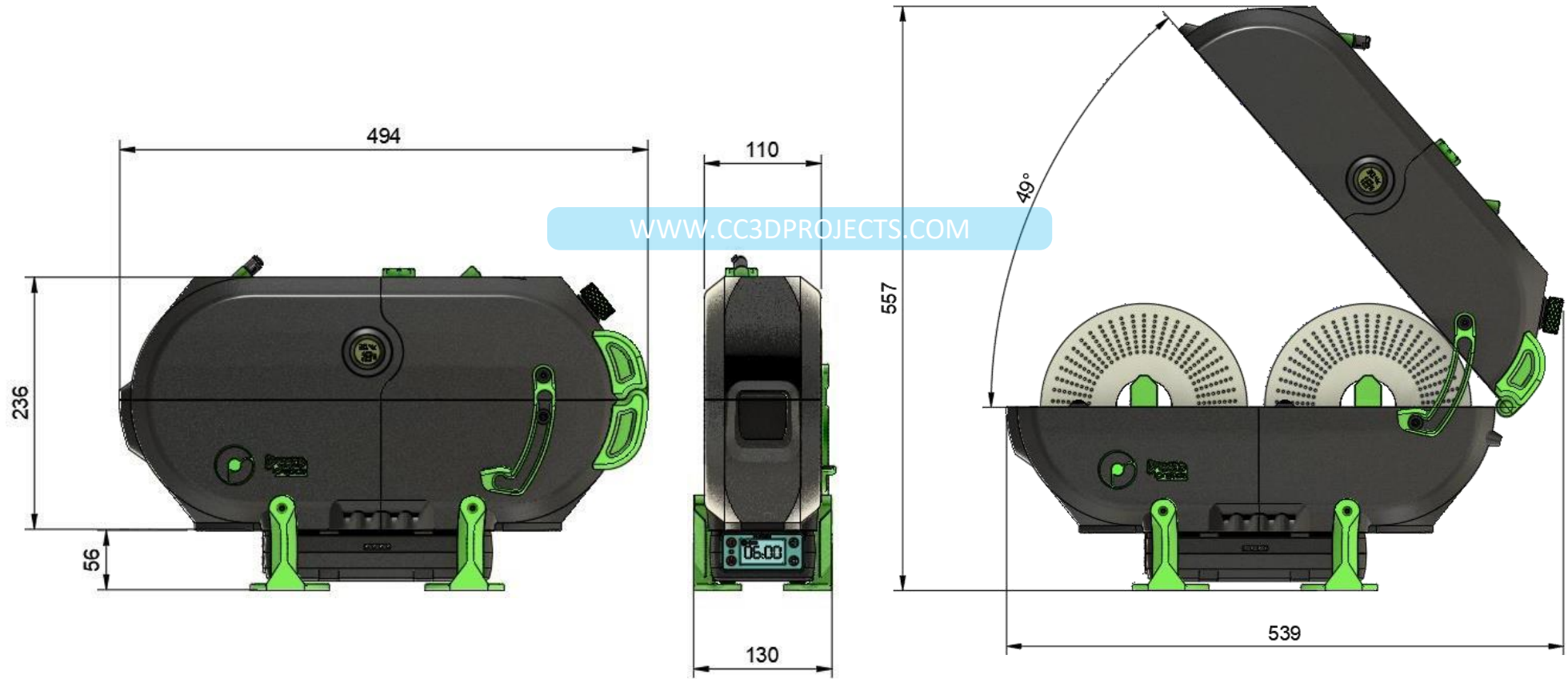


SPOOLBOX with PolyDryer

SPOOLBOX WITH POLYDRYER CONNECTED TO KEEP YOUR FILAMENTS DRY AND ALWAYS READY TO PERFORM AT THEIR BEST. THE MODEL OFFERS:

- **MULTIPLE CONFIGURATIONS:STANDALONE, COMPATIBLE WITH ANY 3D PRINTEROR MOUNTABLE ON ANY DRAWER YOU OWNYOU'LL HAVE.**
- **A HUMIDITY AND TEMPERATURE SENSOR.**
- **THE OPTION TO INSTALL INTERNAL LED LIGHTS SPACE TO HOLD UP TO 2 SPOOLS.**







M4 SCREW

0



Tube Connector

0

MAIN DIFFERENCE

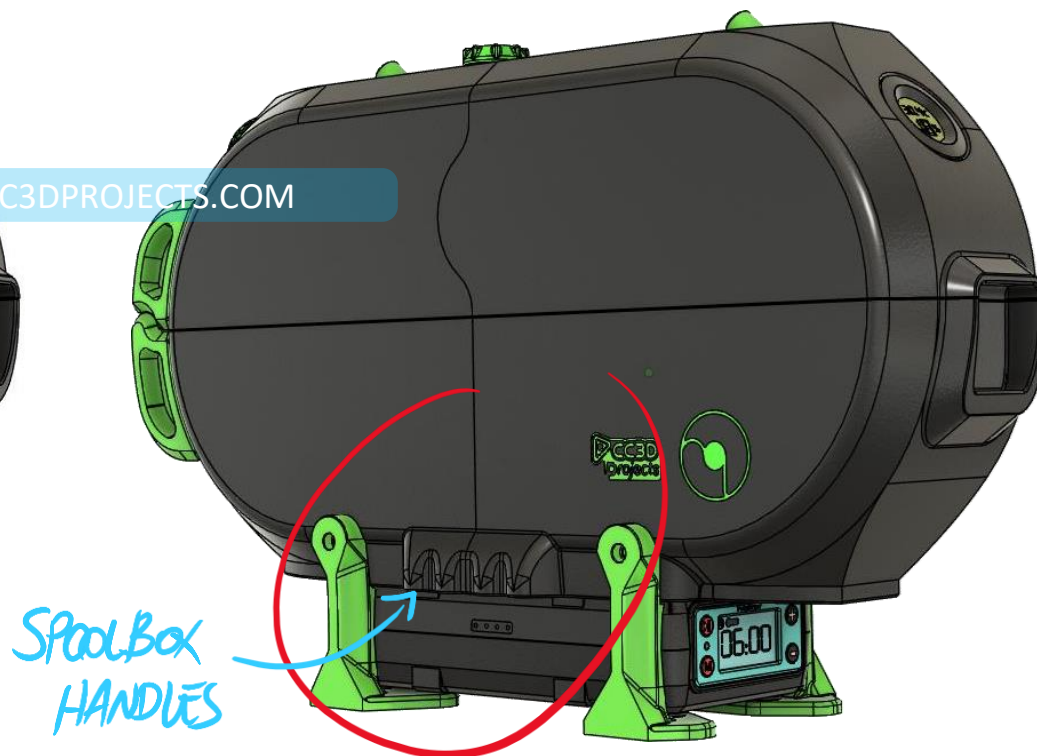
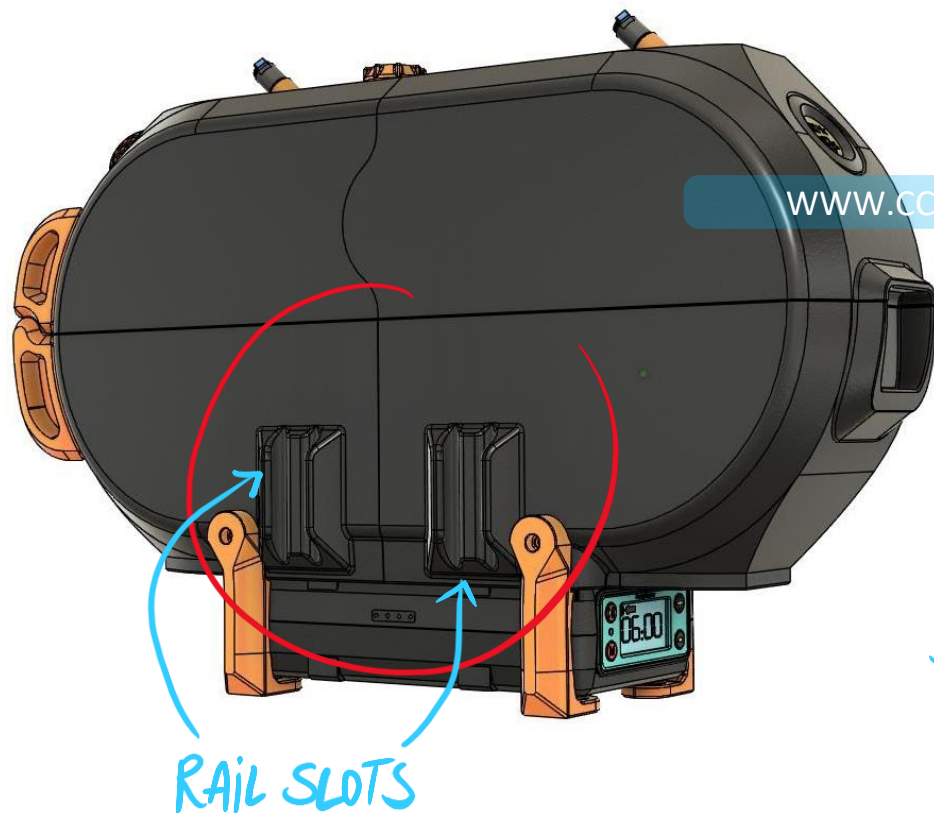
THIS GUIDE WILL SHOW YOU HOW TO ASSEMBLE THE MODEL. WE'LL TAKE THE MORE COMPLEX STAND-ALONE VERSION AS OUR EXAMPLE.

THE MAIN DIFFERENCES FROM THE DRAWER VERSION ARE THE SHAPE OF THE BASE FEET AND THE PRESENCE (OR NOT) OF TWO GROOVES THAT LET YOU ATTACH THE SPOOL BOX TO THE DRAWER. AS MENTIONED EARLIER, THE BOTTOM PART OF THE SPOOL CAN HAVE GROOVES ON THE LEFT SIDE — OR NONE AT ALL.

SPOOLBOX



WWW.CC3DPROJECTS.COM





INFO

WHAT PRINT FILE I USED FOR THIS ASSEMBLY MANUAL?

SPOOLBOX



STAND-ALONE VERSION

	Spool Box - Stand Alone - Left - Front Sensor - LED.3mf 12.43 MB		
	Spool Box - Stand Alone - Left - Front Sensor - NO LED.3mf 11.49 MB		
	Spool Box - Stand Alone - Left - Side Sensor - LED.3mf 12.38 MB		
	Spool Box - Stand Alone - Left - Side Sensor - NO LED.3mf 11.40 MB		
	Spool Box - Stand Alone - Right - Front Sensor - LED.3mf 12.45 MB		
	Spool Box - Stand Alone - Right - Front Sensor - NO LED.3mf 11.51 MB		
	Spool Box - Stand Alone - Right - Side Sensor - NO LED.3mf 11.44 MB		
	Spool Box - Stand Alone - Right - Side Sensor - LED.3mf 12.38 MB		



DRAWER VERSION

	Spool Box - Drawer - Front Sensor - LED.3mf 13.11 MB		
	Spool Box - Drawer - Front Sensor -NO LED.3mf 12.17 MB		
	Spool Box - Drawer - Side Sensor -LED.3mf 13.03 MB		
	Spool Box - Drawer - Side Sensor -NO LED.3mf 12.10 MB		

EACH INDIVIDUAL PRINT FILE CONTAINS ALL THE PARTS NEEDED TO MAKE A COMPLETE VERSION OF THE SPOOLBOX.



REQUIRED SPARE PARTS:



SCREW M4 14 mm

18 units



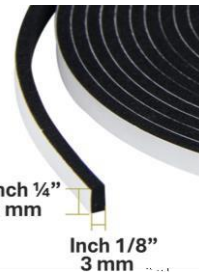
MAGNET 8X2 mm

8 units



HUMIDITY Sensor

1 units



Adhesive GASKET

1m

IF YOU DON'T KNOW WHERE TO BUY THE HARDWARE AND OTHER GADGETS FOR THIS PROJECT, I INVITE YOU TO VISIT THIS PAGE: <https://www.cc3dprojects.com/manuals-hardwares>



M4 SCREW
0



Tube Connector
0

INFO

IN THIS CASE, WE'RE TALKING ABOUT THE "TOP" VERSION. I'M GOING WITH THE ONE THAT HAS A HUMIDITY SENSOR ON THE FRONT AND THE OPTION TO ADD AN LED STRIP INSIDE.

SPOOLBOX





4



Tube Connector

4

LOWER SHELL

TAKE THE TWO BASE PIECES FOR THE STAND-ALONE VERSION, LINE THEM UP, AND SECURE THEM WITH SCREWS IN THE HOLES MARKED IN RED.

NEXT, INSTALL THE MAGNETS IN THE YELLOW HOLES USING THE MAGNET INSTALLER A (YOU CAN GET ONE FOR FREE IN THE SHOP) AND A DROP OF GLUE.

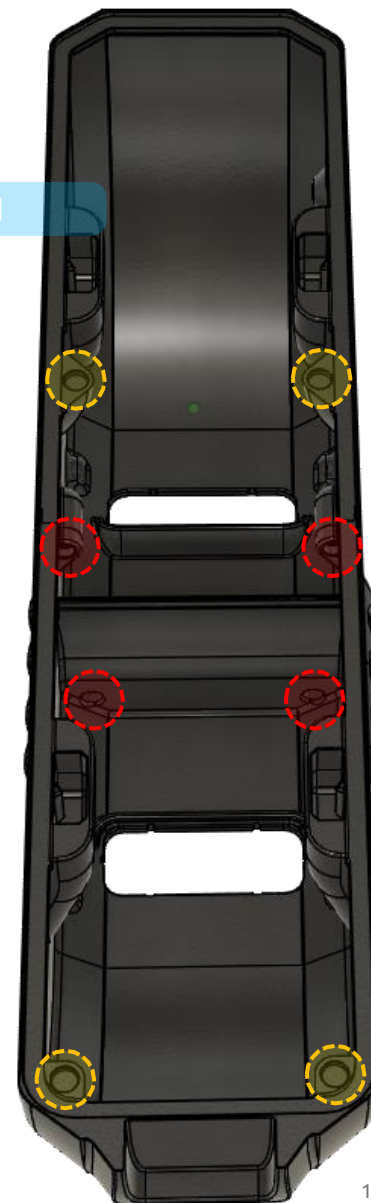
SPOOLBOX



WWW.CC3DPROJECTS.COM

A TIP FROM MY OWN EXPERIENCE: INSTALL THE SCREWS AND MAGNETS FIRST, THEN MASK THE OUTSIDE AND SPRAY THE INSIDE WITH CLEAR ACRYLIC PAINT. THIS CREATES A NICE SEALING FILM THAT MAKES THE SPOOL BOX AIRTIGHT.

PLEASE DO THIS IN A WELL-VENTILATED AREA AND ALWAYS WEAR A MASK, SAFETY GLASSES, AND GLOVES. SAFETY FIRST!





M4 SCREW
1



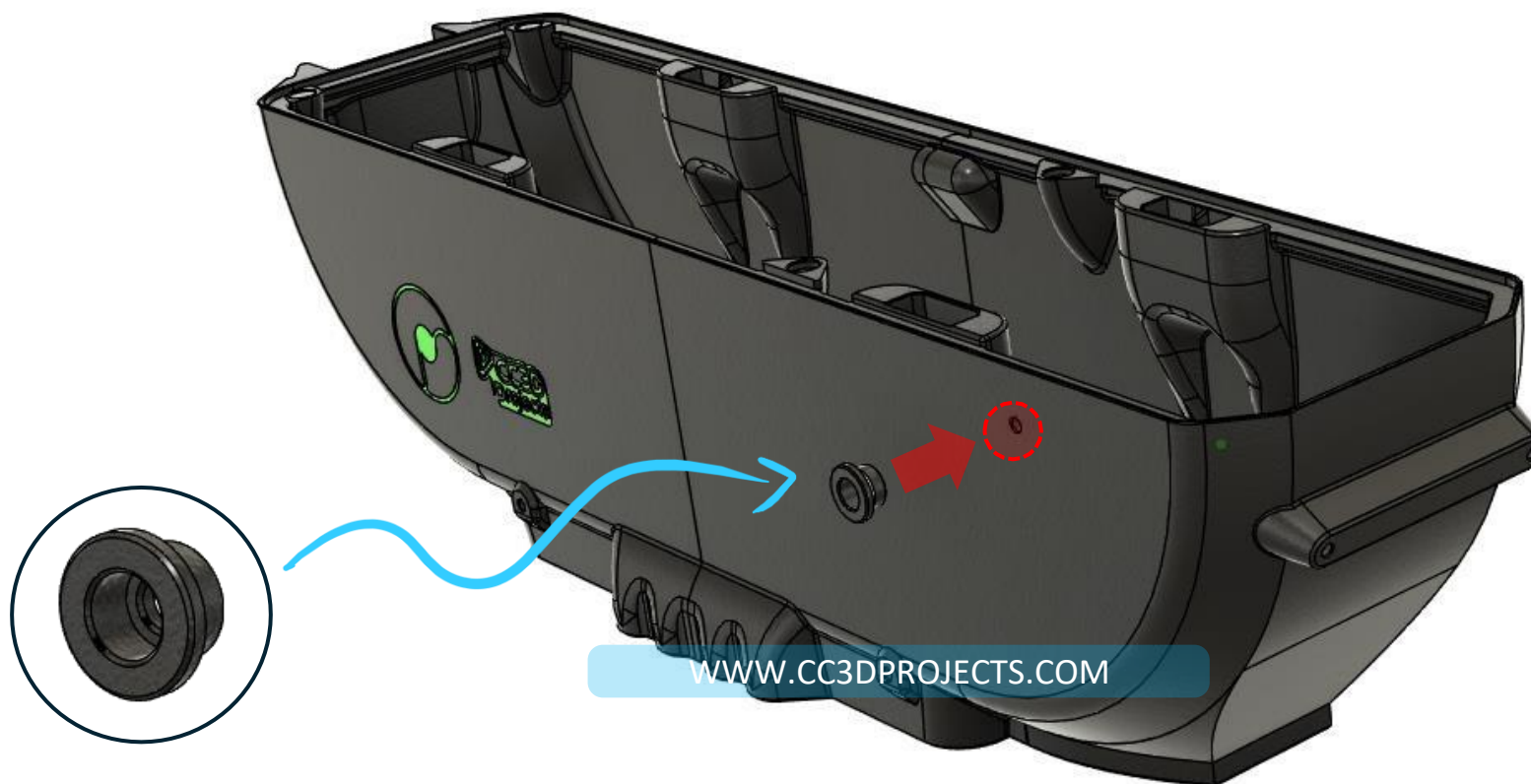
Tube Connector
0

LOWER SHELL

SPOOLBOX



NOW ATTACH THE DOOR STOPPER PIN TO THE SIDE PANEL WITH A SCREW IN THE INDICATED HOLE.



WWW.CC3DPROJECTS.COM



M4 SCREW
0



Tube Connector
0

LOWER SHELL

SPOOLBOX



ADD THE SEAL TO THE LOWER SHELL, FITTING IT INTO THE GROOVE ON THE TOP EDGE. ONCE DONE, SET THIS PART ASIDE.



M4 SCREW
0Tube Connector
0

UPPER SHELL

LET'S MOVE ON TO THE UPPER PART OF THE SPOOL BOX.
FIRST, WE NEED TO INSTALL THE WINDOWS.

I USED A SIMPLE 0.6 MM TRANSPARENT POLYCARBONATE , FLEXIBLE SHEET (YEP, I “borrowed” IT FROM A PHOTO FRAME).
I CUT IT WITH A CRAFT KNIFE USING THE PROVIDED TEMPLATES, GLUED IT WITH SUPERGLUE, AND SEALED THE EDGES 🤪
WITH RUBBER GLUE FOR FULL INSULATION.

A TIP FROM MY OWN EXPERIENCE: BEFORE INSTALLING THE GLASSES, MASK THE OUTSIDE AND SPRAY THE INSIDE WITH CLEAR ACRYLIC PAINT. THIS CREATES A NICE SEALING FILM THAT MAKES THE SPOOL BOX AIRTIGHT.

PLEASE DO THIS IN A WELL-VENTILATED AREA AND ALWAYS WEAR A MASK, SAFETY GLASSES, AND GLOVES. SAFETY FIRST!

WWW.CC3DPROJECTS.COM





M4 SCREW

4



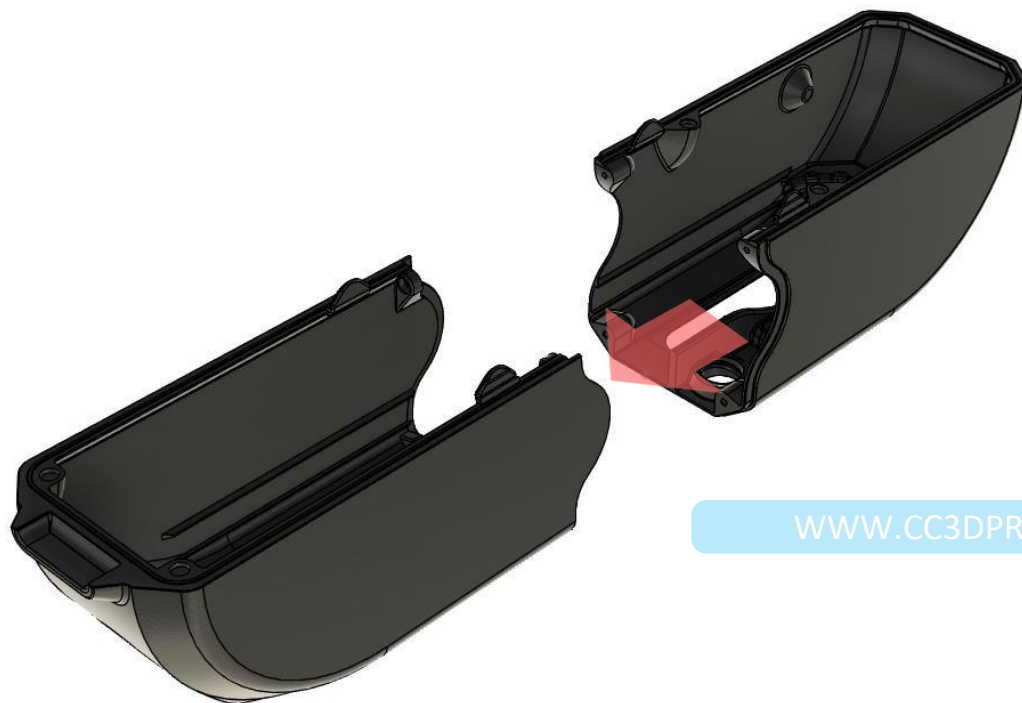
Tube Connector

4

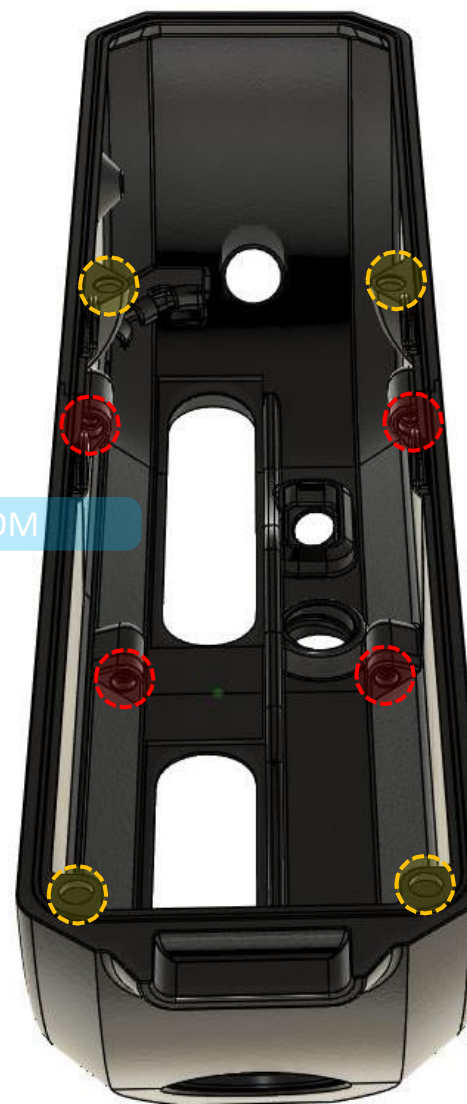
UPPER SHELL

TAKE THE TWO UPPER PARTS, LINE THEM UP, AND FASTEN THEM WITH SCREWS IN THE RED HOLES. THEN INSTALL THE MAGNETS IN THE YELLOW HOLES USING MAGNET INSTALLER B (ALSO FREE IN THE SHOP) AND A DROP OF GLUE.

SPOOLBOX



WWW.CC3DPROJECTS.COM





M4 SCREW

0



Tube Connector

0

UPPER SHELL

SPOOLBOX



NEXT, LET'S MOUNT THE CABLE PASS-THROUGH FOR THE LED STRIP.

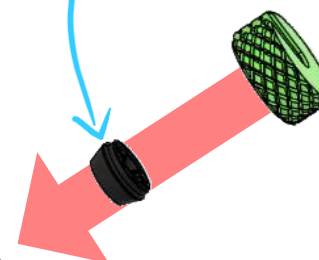
GLUE THE THREADED PART TO THE TOP SURFACE — IT HAS A LITTLE NOTCH THAT HELPS YOU CENTER IT PERFECTLY. ADD SOME SUPERGLUE, INSERT THE SEAL, AND SCREW ON THE CAP.

NOTE: THE SEAL HAS AN OPEN SIDE THAT WILL HELP YOU PASS THE CABLE THROUGH LATER.



WWW.CC3DPROJECTS.COM

GASKET



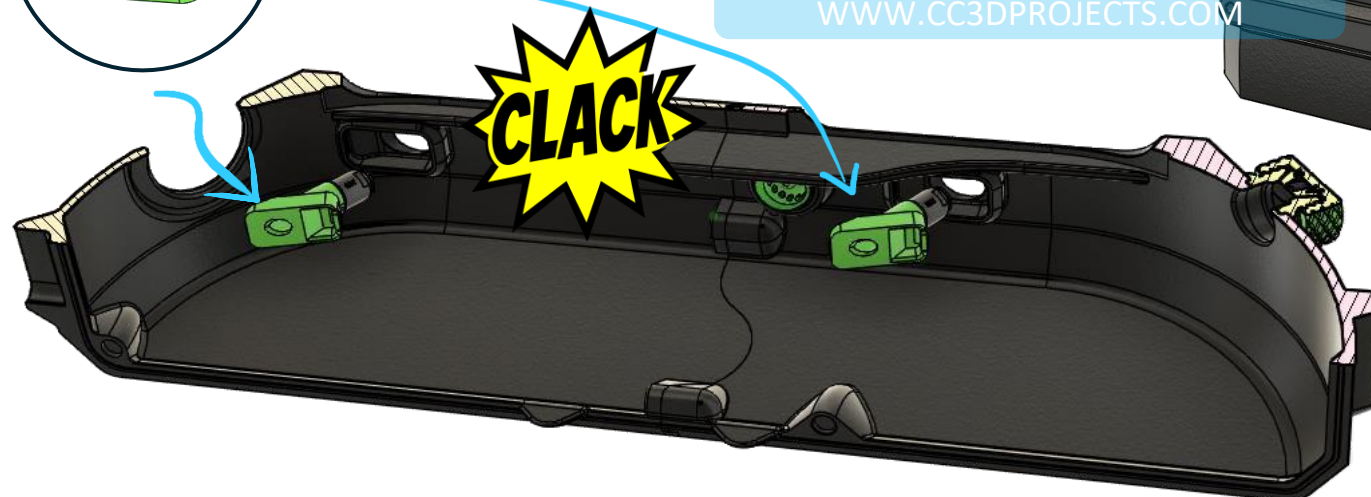
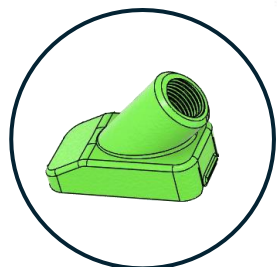
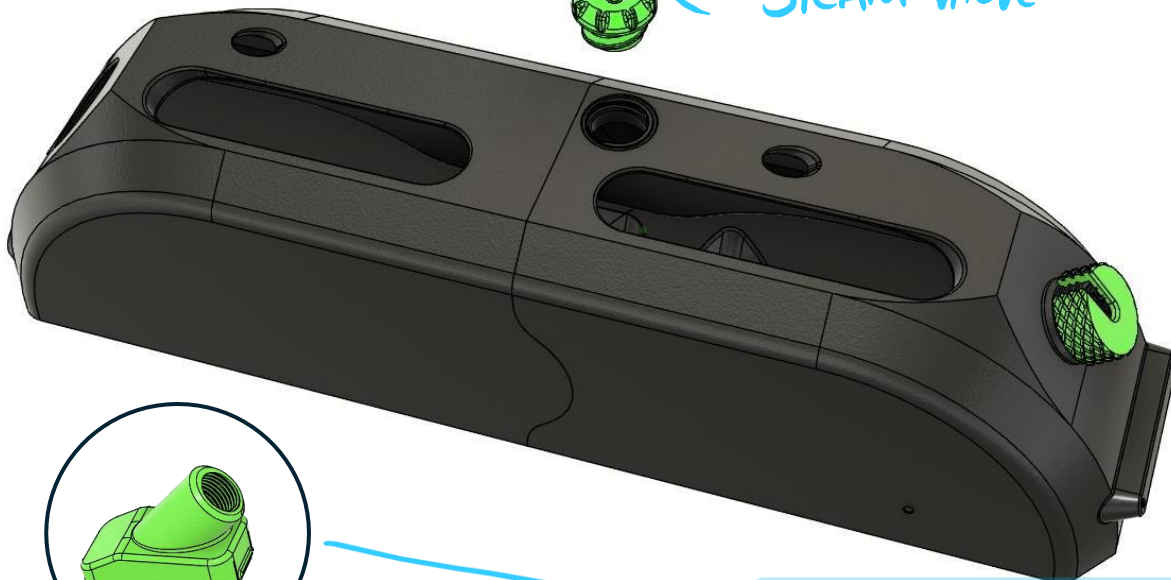


UPPER SHELL

SPOOLBOX



SCREW IN THE STEAM VALVE RIGHT INTO THE THREADED HOLE IN THE CENTER.
PUSH THE FILAMENT GUIDES INTO THEIR HOLES UNTIL YOU HEAR A “CLACK.” IF YOU WANT, YOU CAN SCREW IN THE M10 FITTINGS TO ADD A PTFE TUBE AND MAKE FILAMENT FEEDING EASIER.



WWW.CC3DPROJECTS.COM



M4 SCREW
0



Tube Connector
0

UPPER SHELL

INSTALL THE TEMPERATURE AND HUMIDITY SENSOR INTO THE FRONT HOLE.

SPOOLBOX





M4 SCREW
0

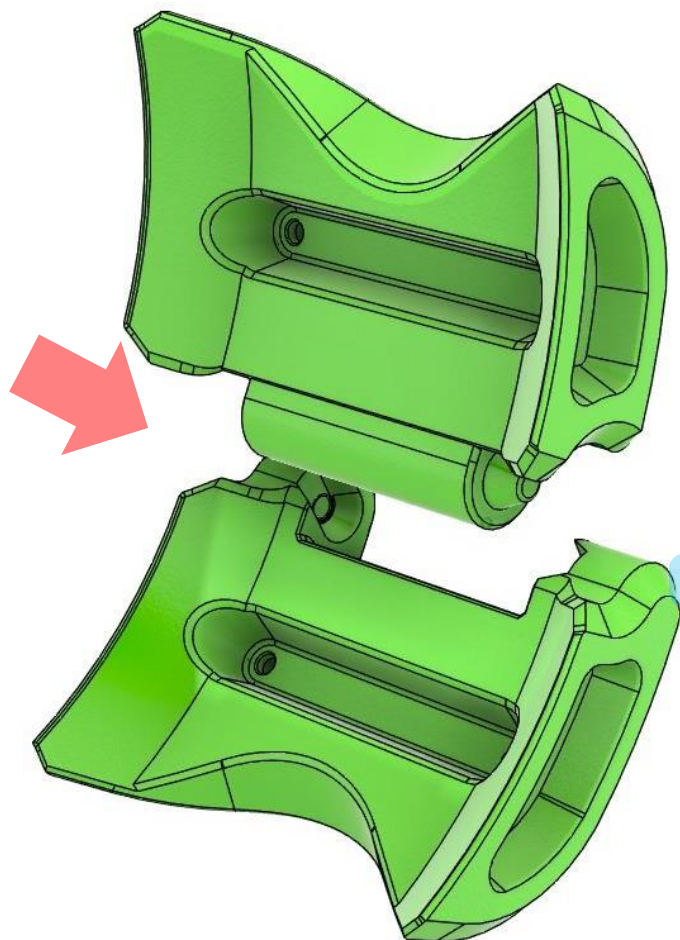


Tube Connector
0

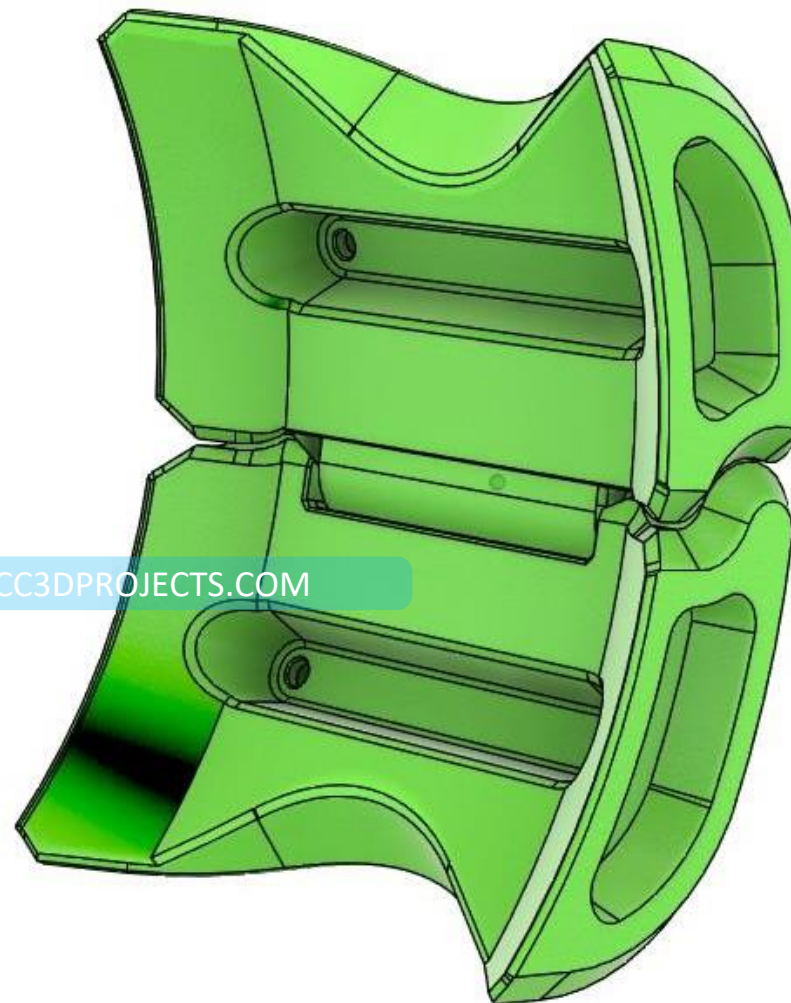
HINGE

ASSEMBLE THE REAR HINGE.

SPOOLBOX



WWW.CC3DPROJECTS.COM





M4 SCREW
0



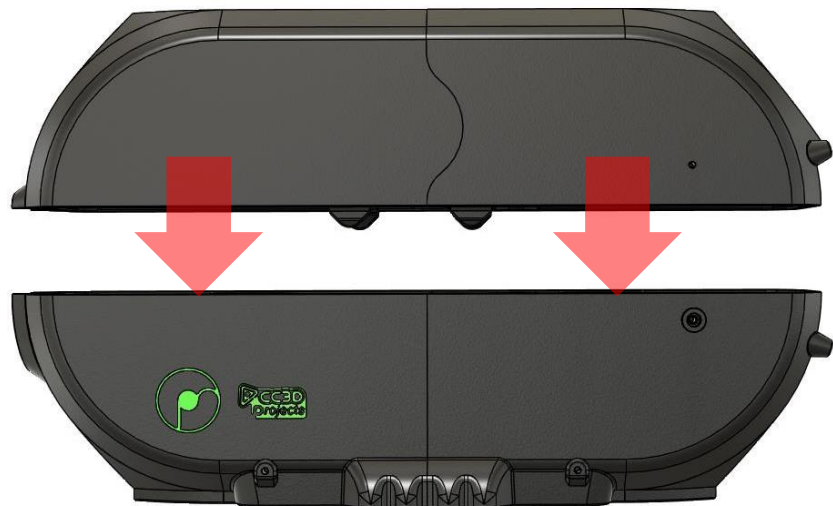
Tube Connector
0

PUTTING IT ALL TOGETHER

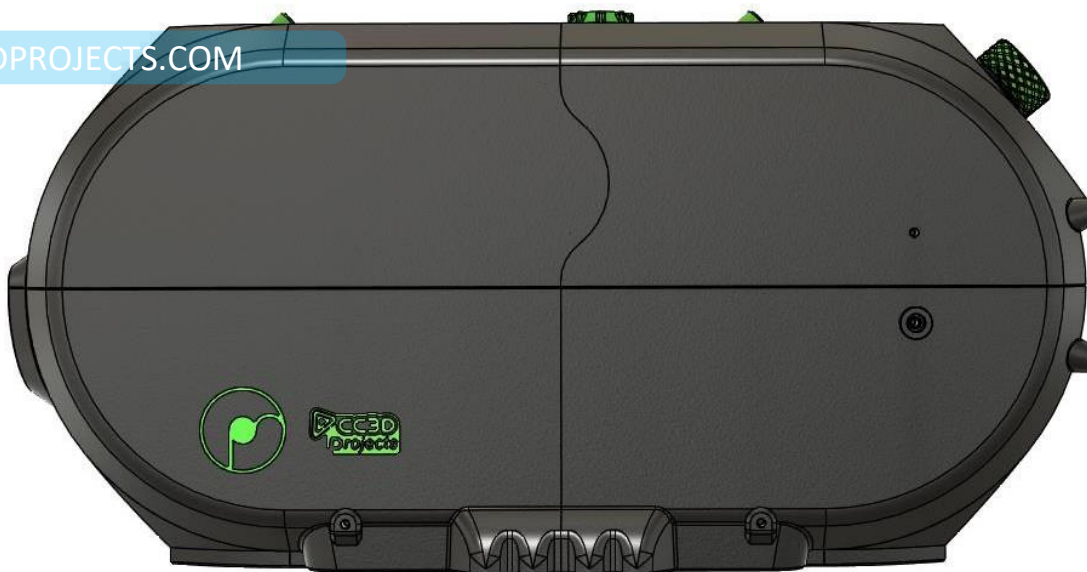
SPOOLBOX



JOIN THE TWO HALVES OF THE SPOOL BOX — THE MAGNETS WILL SNAP EVERYTHING INTO PLACE.



WWW.CC3DPROJECTS.COM





4

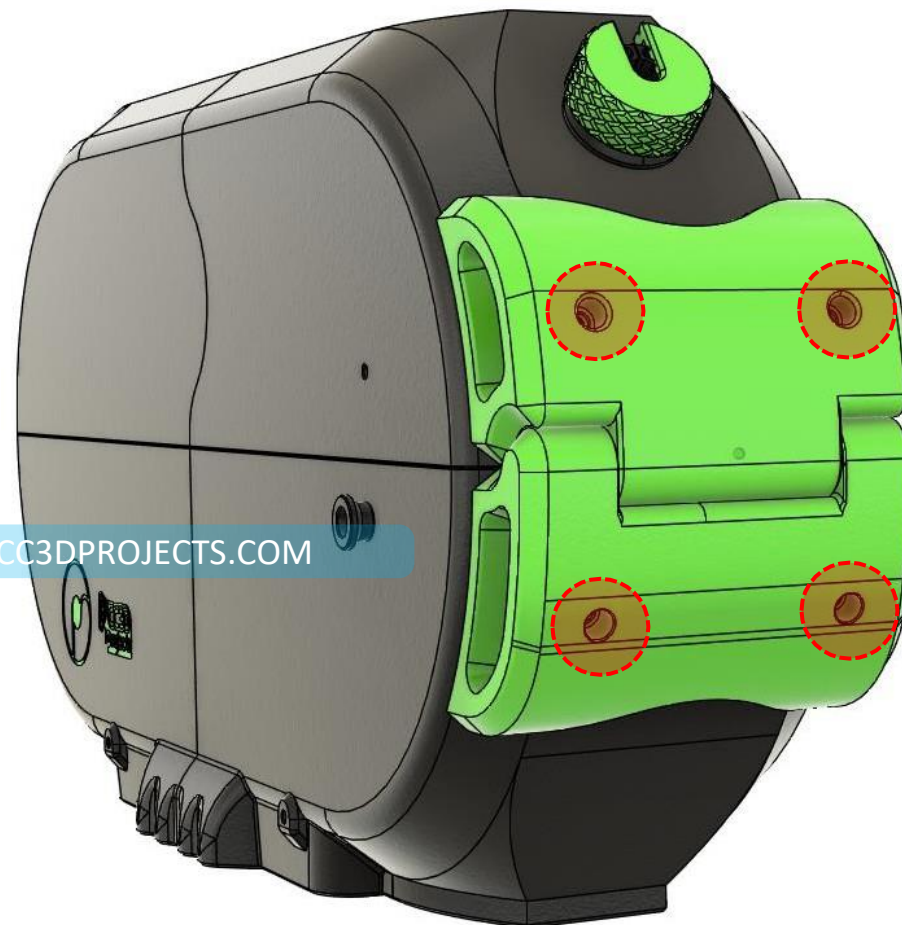
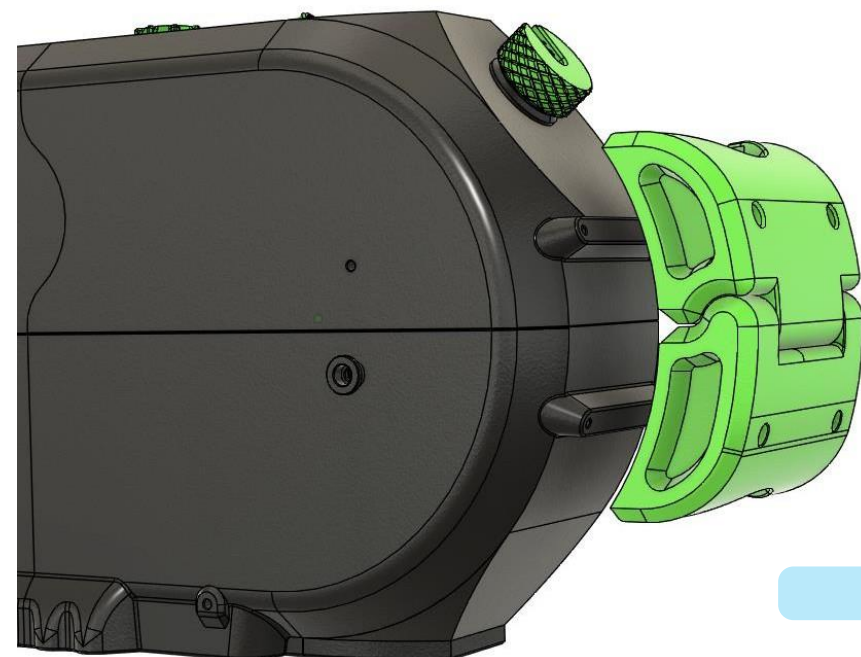


0

PUTTING IT ALL TOGETHER

ALIGN THE HINGES WITH THE BODY AND SCREW THEM IN USING THE RED HOLES.

SPOOLBOX



WWW.CC3DPROJECTS.COM



1



Tube Connector

0

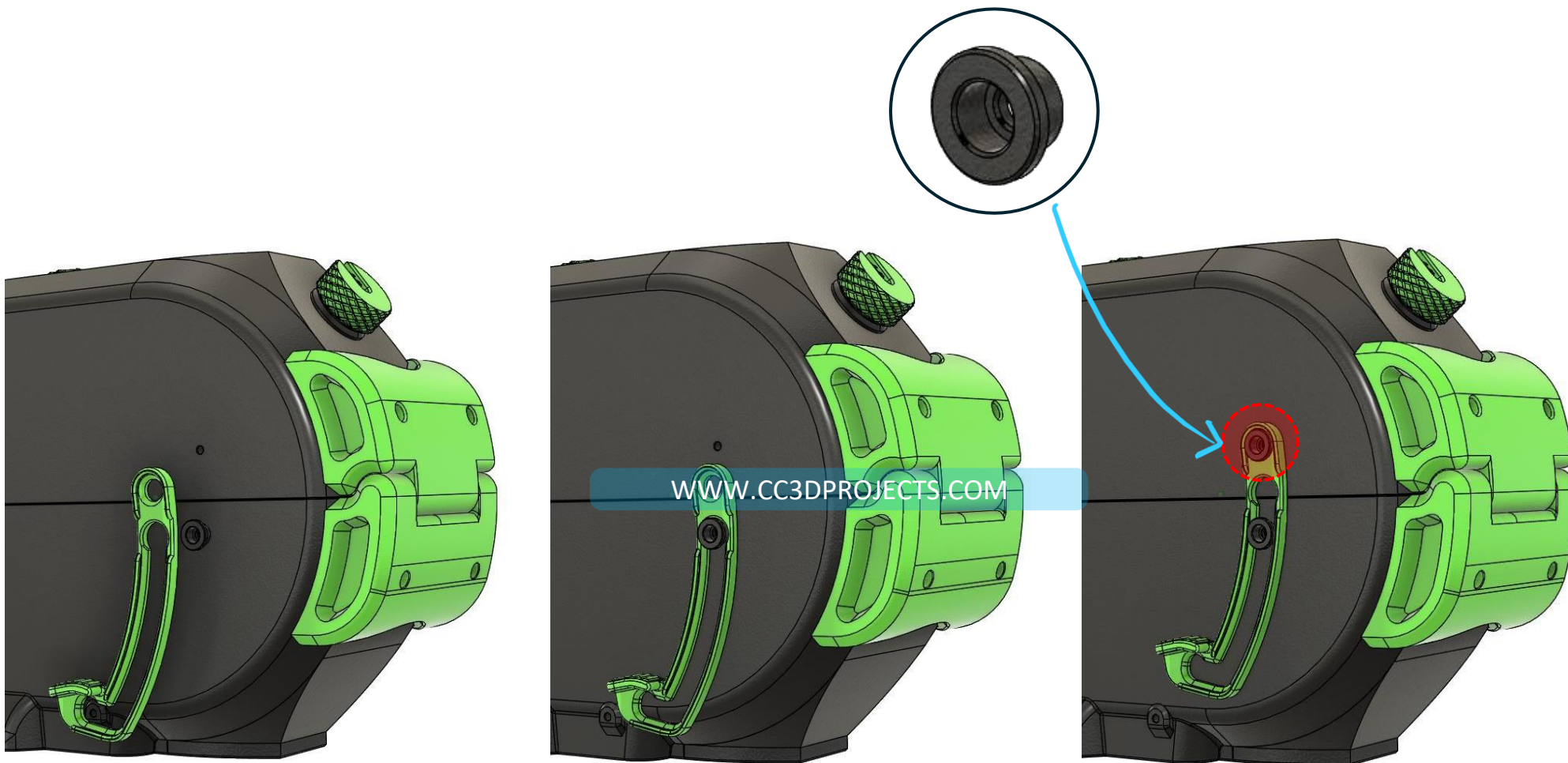
PUTTING IT ALL TOGETHER

SPOOLBOX



INSTALL THE DOOR STOPPER.

SLIDE IT ONTO THE LOWER PIN, MOVE IT UP TO THE TOP HOLE, AND LOCK IT WITH A SCREW IN THE RED HOLE.





M4 SCREW
0



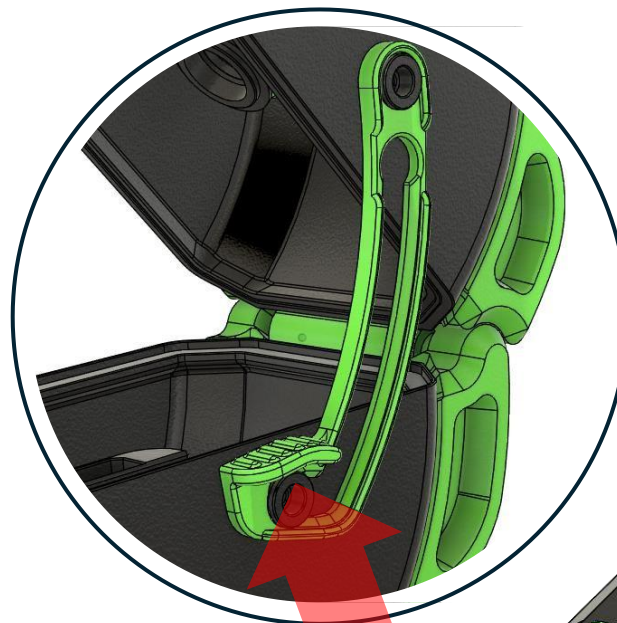
Tube Connector
0

PUTTING IT ALL TOGETHER

SPOOLBOX



WHEN YOU OPEN THE SPOOL BOX, YOU'LL HEAR A "CLICK" FROM THE STOPPER — THAT MEANS THE LID IS LOCKED FULLY OPEN. TO CLOSE IT, JUST PULL UP THE LITTLE HANDLE ON THE STOPPER, RELEASE IT, AND SHUT THE BOX.



PULL-UP

WWW.CC3DPROJECTS.COM





M4 SCREW
0



Tube Connector
0

PUTTING IT ALL TOGETHER

SPOOLBOX



FLIP THE SPOOL BOX UPSIDE DOWN AND INSTALL THE SEALS ON THE BOTTOM. THESE WILL CLOSE THE AIR CHANNELS FOR THE POLYDRYER.





M4 SCREW
0

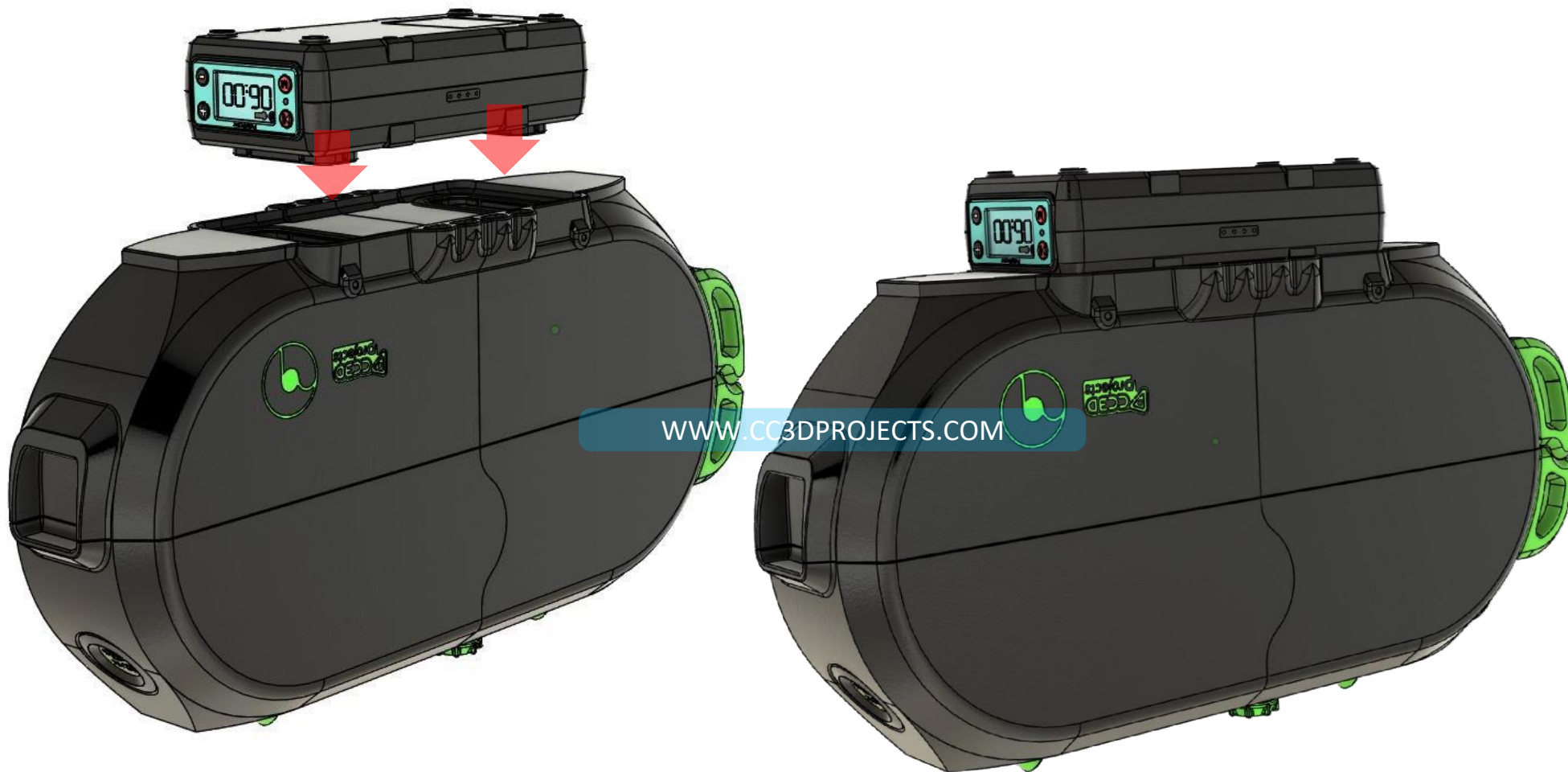


Tube Connector
0

PUTTING IT ALL TOGETHER

PLACE THE POLYDRYER UNDERNEATH AND CHECK EVERYTHING IS ALIGNED.

SPOOLBOX





M4 SCREW
0



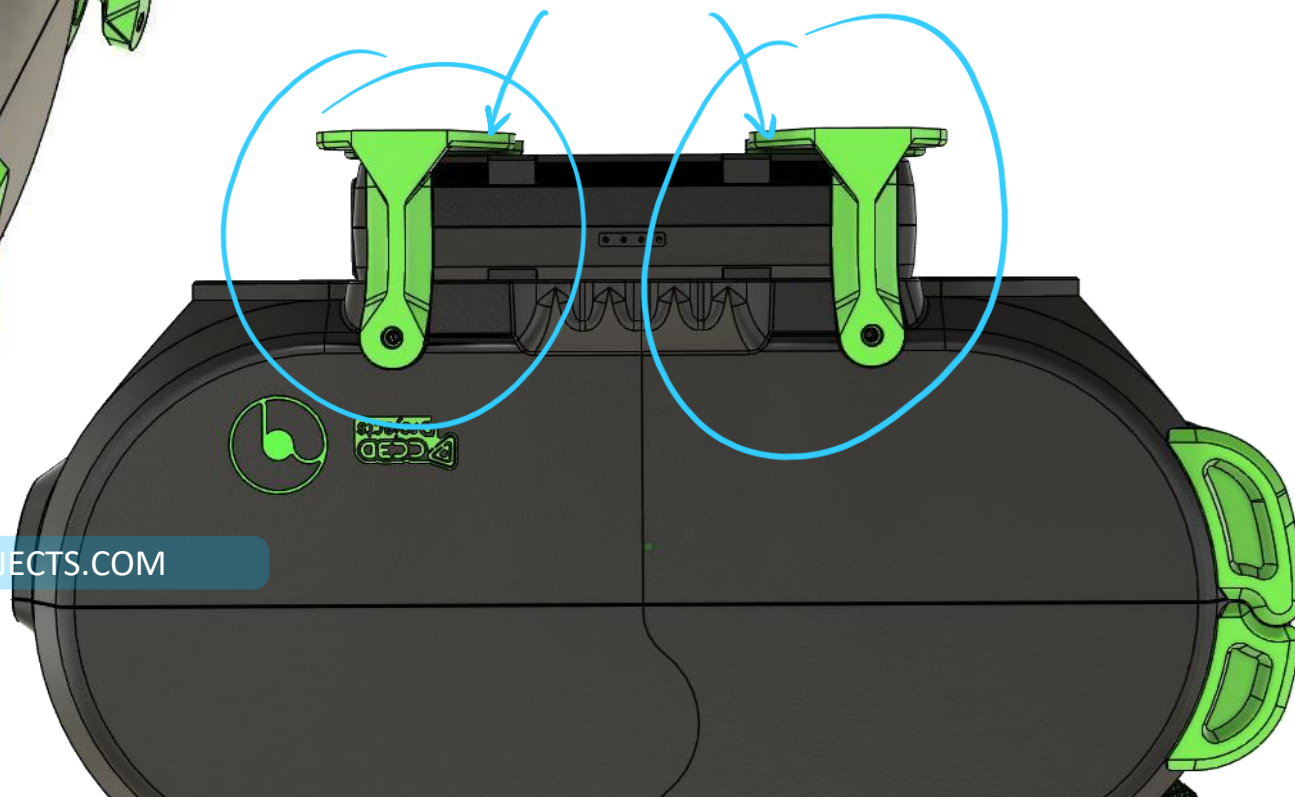
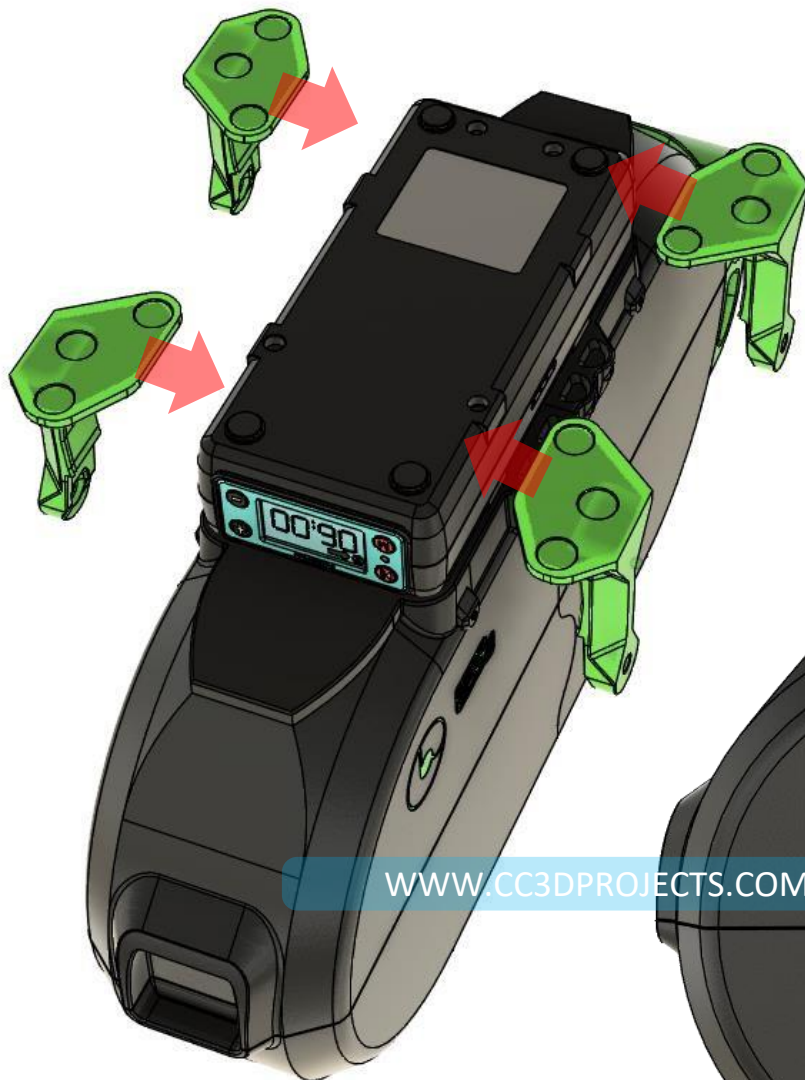
Tube Connector
0

PUTTING IT ALL TOGETHER

SPOOLBOX



NOW INSTALL THE FOUR FEET, ONE AT A TIME, MAKING SURE TO FOLLOW THE CORRECT ORIENTATION.



WWW.CC3DPROJECTS.COM



4



Tube Connector

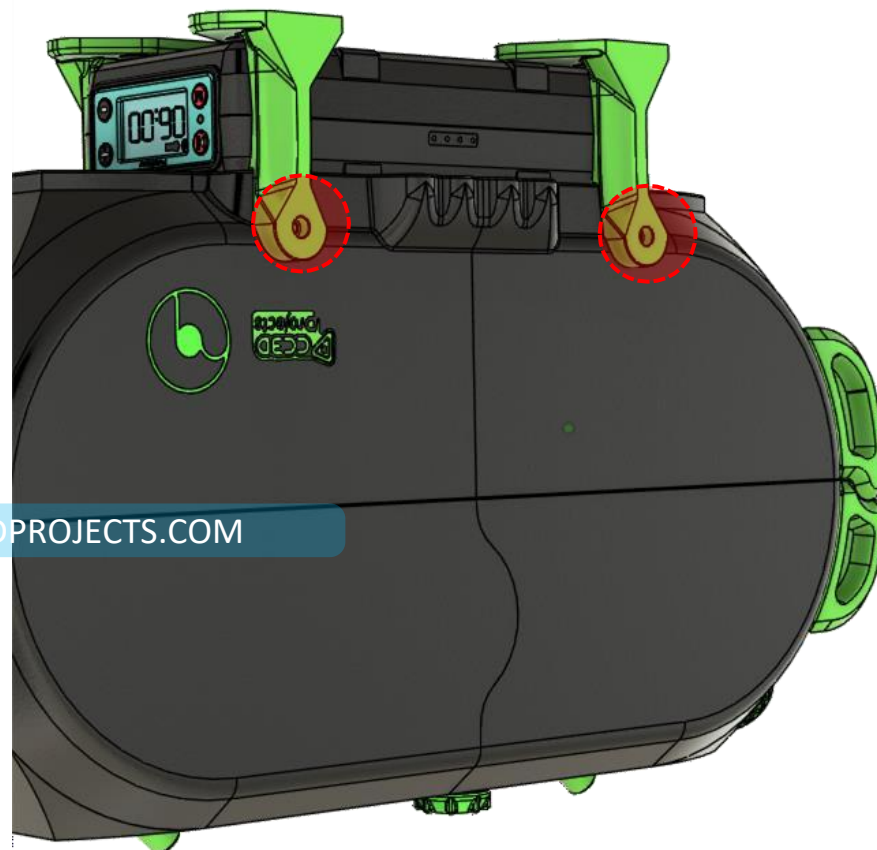
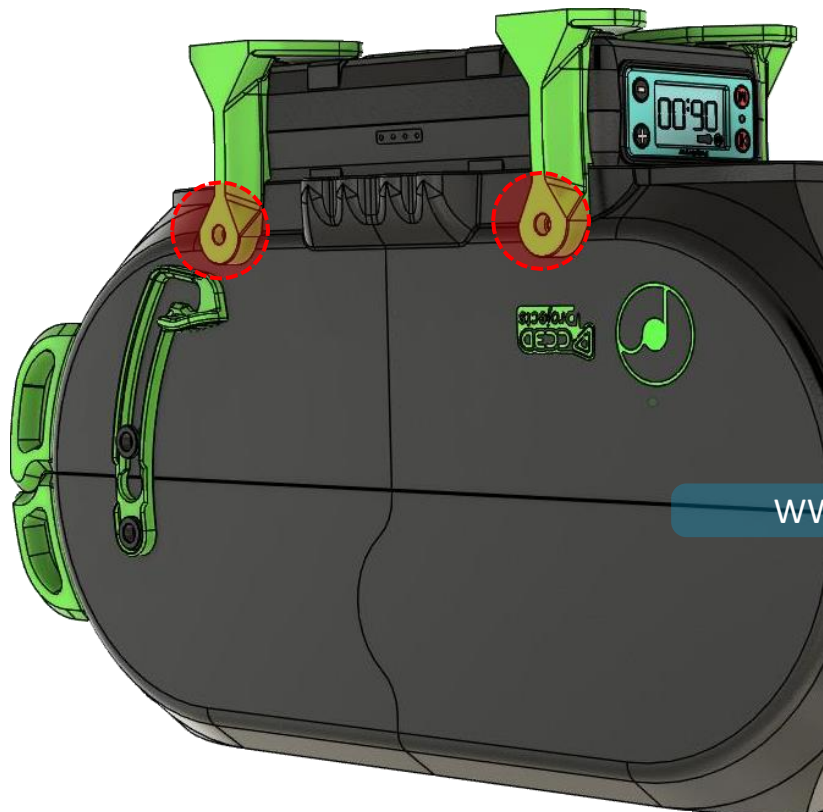
0

PUTTING IT ALL TOGETHER

SCREW THEM INTO THE MARKED HOLES.

IF IT FEELS A LITTLE TIGHT, DON'T WORRY — THAT'S JUST THE SEALS PRESSING. A BIT OF PRESSURE WILL DO THE TRICK.

SPOOLBOX



WWW.CC3DPROJECTS.COM



M4 SCREW

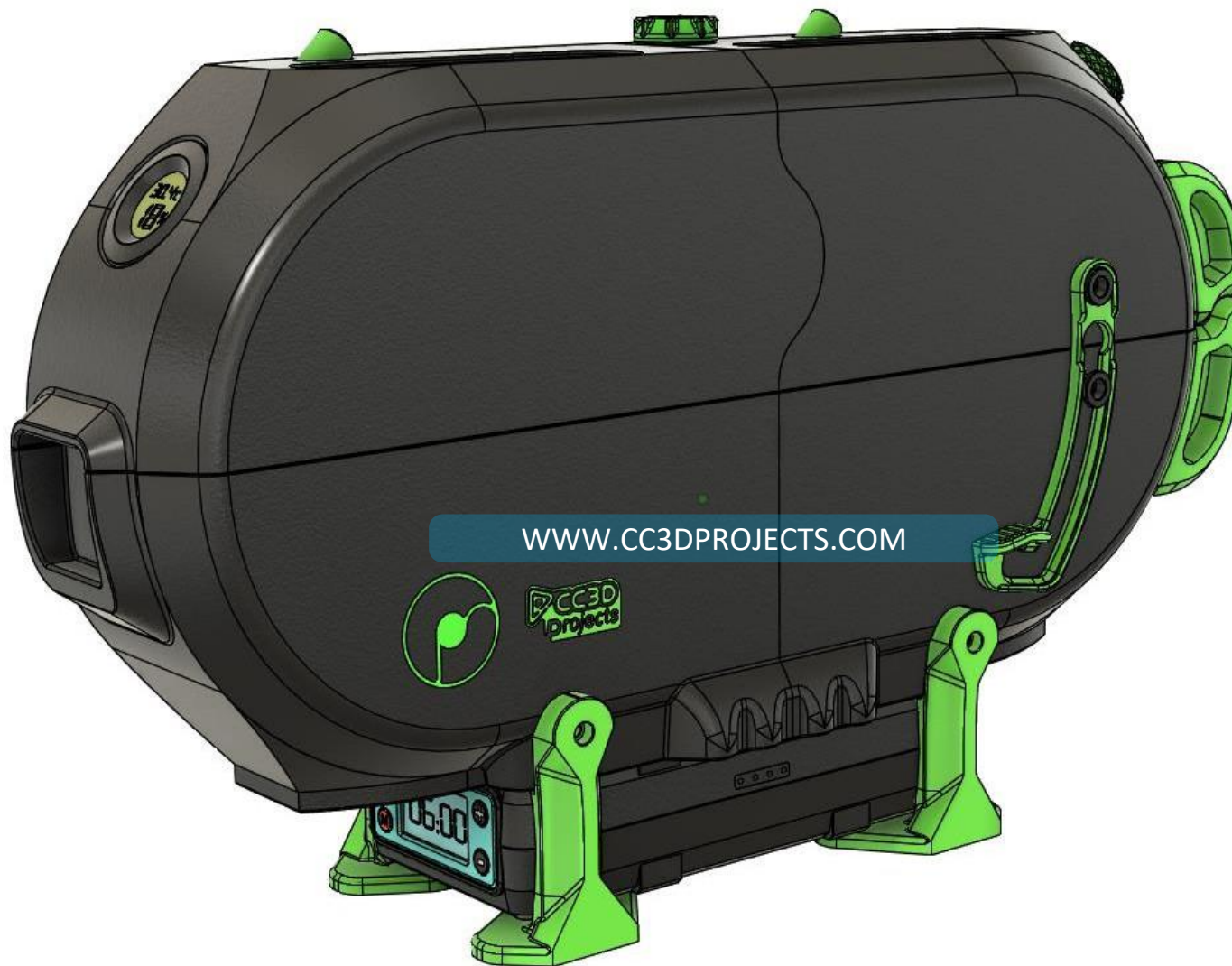


Tube Connector

PUTTING IT ALL TOGETHER

AND THAT'S IT — THE STRUCTURE IS COMPLETE!

SPOOLBOX



WWW.CC3DPROJECTS.COM



M4 SCREW
0



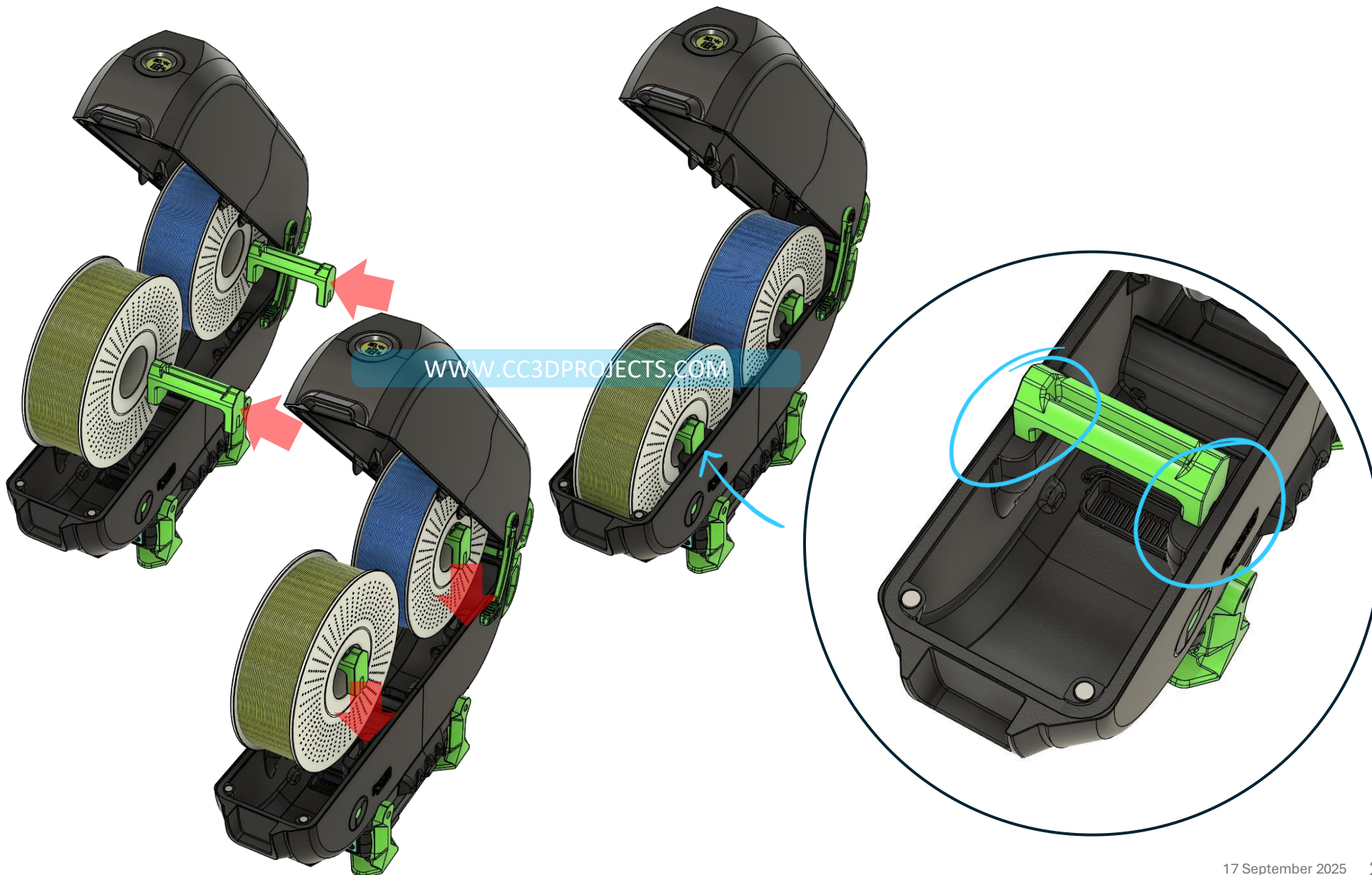
Tube Connector
0

PUTTING IT ALL TOGETHER

SPOOLBOX



TO LOAD THE SPOOL: FIRST SLIDE THE HOLDER INTO THE SPOOL'S CENTER HOLE, THEN PLACE IT INSIDE THE SPOOL BOX. AFTER THAT, FEED THE FILAMENTS THROUGH THE OUTLET HOLES.





M4 SCREW
0



Tube Connector
0

MAIN BODY

SPOOLBOX



IF YOU HAVE PRINTED AND ASSEMBLED THE DRAWER VERSION, NOW YOU NEED TO INSTALL THE RAILS ON THE DRAWER OF YOUR ELEGOO CENTAURY CARBON, OR GLUE THE RAILS ONTO ANY DRAWER YOU ALREADY HAVE. MAKE SURE TO CENTER EVERYTHING BEFORE GLUING – CHECK IT 10 TIMES SO, YOU'RE SURE.





M4 SCREW
0



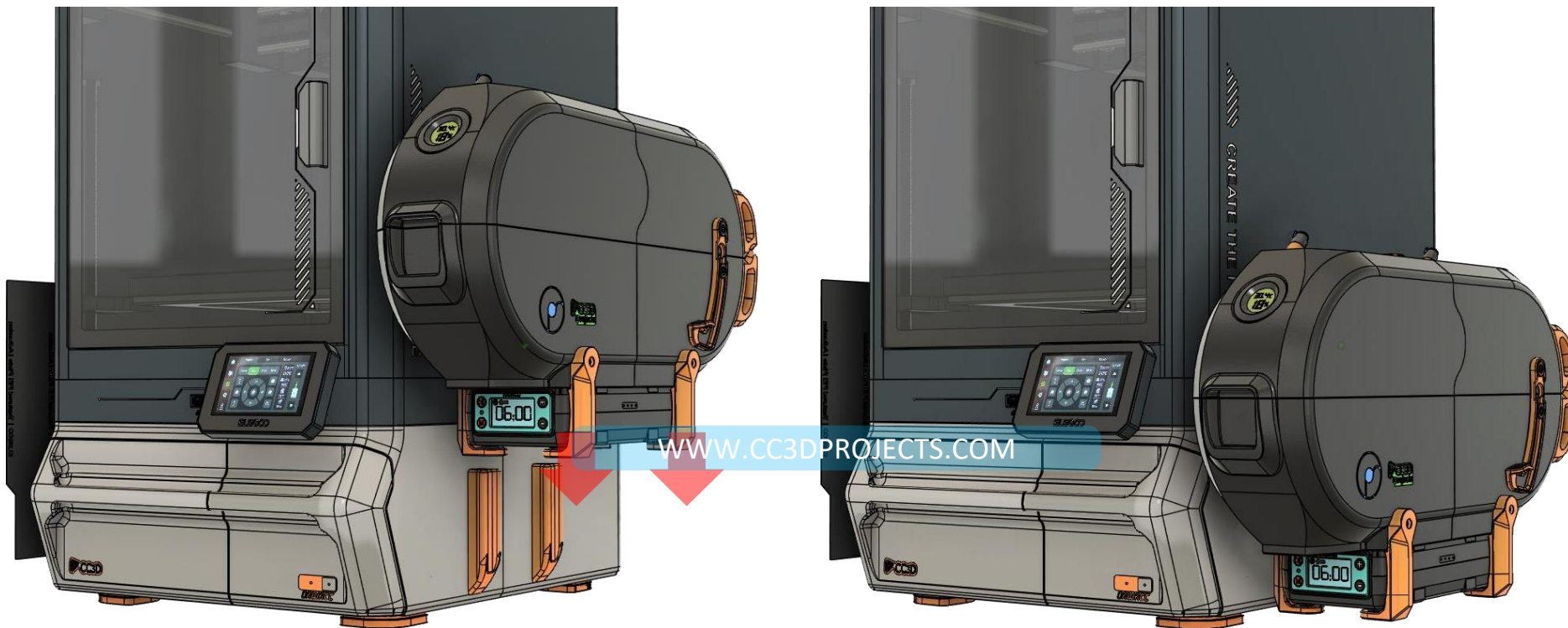
Tube Connector
0

MAIN BODY

SPOOLBOX



NOW, USING THE GUIDES ON THE RIGHT SIDE OF THE SPOOLBOX, ATTACH THE BOX TO THE DRAWER IN A SOLID AND SECURE WAY.
VOILÀ – YOU'RE DONE. CONGRATULATIONS, YOU DID A GREAT JOB.



I WOULD LOVE TO SEE YOUR FINAL BUILD!
SHARE YOUR RESULT AND TAG IT WITH #CC3DPROJECTS
IT MEANS A LOT TO ME AND HELPS ME GROW AND GET DISCOVERED.
CAN'T WAIT TO SEE YOUR CREATIONS!



© 2025 CC3DPROJECTS. ALL RIGHTS RESERVED.

THIS MANUAL IS PROTECTED BY COPYRIGHT LAW AND MAY NOT BE REPRODUCED, DISTRIBUTED, OR USED IN WHOLE OR IN PART WITHOUT THE WRITTEN PERMISSION OF THE AUTHOR OR PUBLISHER. ANY VIOLATION WILL BE PROSECUTED TO THE FULLEST EXTENT OF THE LAW.

THE SPOOLBOX ALL ITS COMPONENTS, INCLUDING BUT NOT LIMITED TO DESIGNS, SCHEMATICS, ASSEMBLY INSTRUCTIONS, AND PHOTOGRAPHS, ARE THE EXCLUSIVE PROPERTY OF ENRICO MAZZAROL AND ARE PROTECTED BY COPYRIGHT LAW AND OTHER INTELLECTUAL PROPERTY LAWS.

COPYING, DISTRIBUTING, MODIFYING, REPRODUCING, TRANSMITTING, OR USING THE HDRY SYSTEM IN ANY FORM WITHOUT THE WRITTEN PERMISSION OF CC3DPROJECTS IS PROHIBITED.