



## ANYCUBIC KOBRA S1 DRAWER

### DRAWER FOR ANYCUBIC KOBRA S1

THIS CUSTOM-DESIGNED DRAWER FOR THE ANYCUBIC KOBRA S1 IS A MODULAR, FUNCTIONAL SOLUTION BUILT TO IMPROVE ORGANIZATION, MANAGE WASTE, AND MAXIMIZE SPACE USAGE. FULLY 3D-PRINTABLE, IT COMBINES PRACTICALITY WITH A CLEAN, MODERN LOOK.

#### KEY FEATURES:

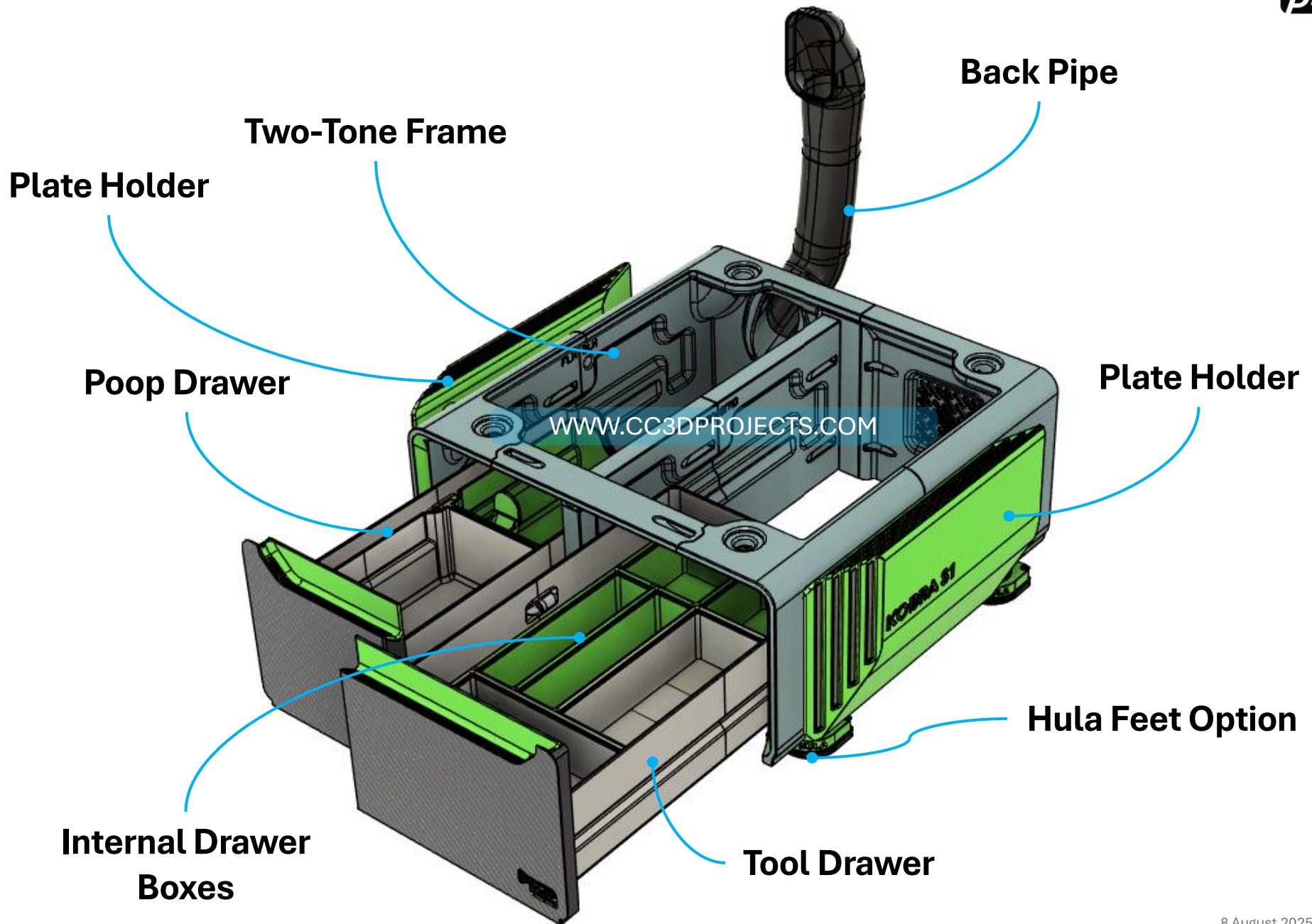
- TWO DEDICATED DRAWERS: ONE FOR WASTE COLLECTION AND ONE FOR TOOLS AND SPARE PARTS.
- WASTE COLLECTION DRAWER: INCLUDES TWO INTERNAL BOXES TO OPTIMIZE SPACE AND SEPARATION OF PURGE MATERIAL.
- TOOLS & SPARE PARTS DRAWER: ORGANIZED WITH GRIDFINITY-STYLE BOXES FOR CUSTOMIZABLE, MODULAR STORAGE.
- REAR WASTE PIPE SYSTEM: A REAR-MOUNTED PIPE DIRECTS PURGE WASTE DIRECTLY INTO THE WASTE DRAWER.
- PRINT PLATE HOLDERS: DUAL SIDE MOUNTS HOLD UP TO 8 PRINT PLATES FOR EASY ACCESS AND STORAGE.
- OPTIONAL HULA FEET COMPATIBILITY: DESIGNED FOR OPTIONAL INSTALLATION OF HULA FEET FOR VIBRATION ISOLATION.

#### STYLE NOTES:

IF YOU HAVE A MULTI-MATERIAL PRINTING SETUP (SUCH AS THE ACE SYSTEM), YOU CAN PRINT BOTH THE DRAWER FRONTS AND THE MAIN FRONT PANEL OF THE BODY IN DUAL COLOR, ALLOWING FOR A STYLISH, HIGH-CONTRAST FINISH THAT ENHANCES THE OVERALL LOOK OF YOUR PRINTER SETUP.

## KEY CHARACTERISTICS

## ANYCUBIC KOBRA S1 DRAWER





WWW.CC3DPROJECTS.COM



## Main Body and Drawers

PETG	PETG	PETG	PETG
			
430 g	1.3 Kg	1.9 Kg	560 g

Print time  
6d 15h 50m

## REQUIRED SPARE PARTS:



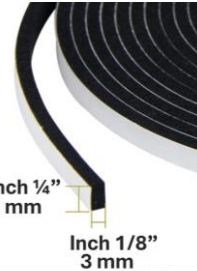
SCREW M4 14 mm

30 units



MAGNET 8X2 mm

4 units



Adhesive GASKET

1m

[WWW.CC3DPROJECTS.COM](http://WWW.CC3DPROJECTS.COM)

FOLLOW THESE SIMPLE TIPS AND YOU'RE GOLDEN:



### 1. STICK WITH REGULAR PETG

USE STANDARD PETG, AND SKIP THE HIGH FLOW (HF) STUFF. HF MIGHT SOUND COOL, BUT IT CAN'T HANDLE HEAT AS WELL, AND THAT CAN MESS WITH YOUR PRINT'S DURABILITY. YEAH, REGULAR PETG IS SHINIER — I GET IT — BUT HERE'S A TRICK: SPRAY IT WITH A MATTE CLEAR COAT LIKE I DID. BOOM! PROBLEM SOLVED.



### 2. DON'T USE PLA FOR SUPPORTS

VOID USING PLA AS SUPPORT MATERIAL. SERIOUSLY. EVEN IF YOU SWITCH FILAMENTS, LEFTOVER PLA IN THE NOZZLE CAN MESS WITH LAYER ADHESION, AND THAT'S NO FUN. AND DON'T STRESS — THE SUPPORTS COME OFF EASY, I PROMISE. YOU GOT THIS.



### 3. KEEP IT SLOW AND STEADY

RESIST THE URGE TO CRANK UP THE PRINT SPEED. GOING TOO FAST CAN LEAD TO WEIRD-LOOKING CORNERS AND WARPED PARTS. STICK TO STANDARD SPEED — YOUR PRINT WILL THANK YOU.



### 4. USE A GRIPPY PRINT BED

THESE PARTS ARE ON THE BIGGER SIDE, SO BED ADHESION IS EVERYTHING. MAKE SURE YOUR BUILD PLATE'S GOT A GOOD GRIP TO AVOID WARPING OR LIFTING. TRUST ME, A SOLID FIRST LAYER MAKES ALL THE DIFFERENCE.

[WWW.CC3DPROJECTS.COM](http://WWW.CC3DPROJECTS.COM)





**M4 SCREW**

0



### Tube Connector

## ANYCUBIC KOBRA S1 DRAWER



***BLH***

WWW.CC3DPROJECTS.COM

**FLH**

ON THE INSIDE OF THE TWO PIECES, YOU'LL FIND THREE HOLES HIGHLIGHTED IN YELLOW. THESE ARE THE ONES YOU'LL NEED TO FINISH DRILLING OUT WITH A 4.5 MM BIT IF YOU PLAN TO MOUNT THE PLATE HOLDER ON THIS SIDE OF THE DRAWER UNIT.



M4 SCREW

0



Tube Connector

0

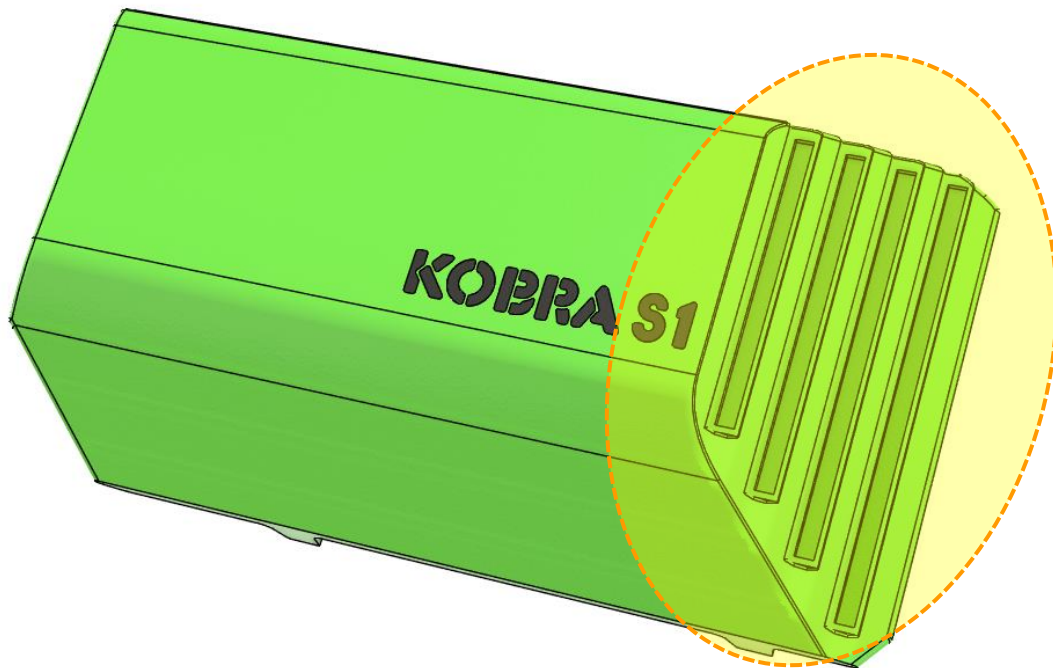
## PLATE HOLDER

# ANYCUBIC KOBRA S1 DRAWER

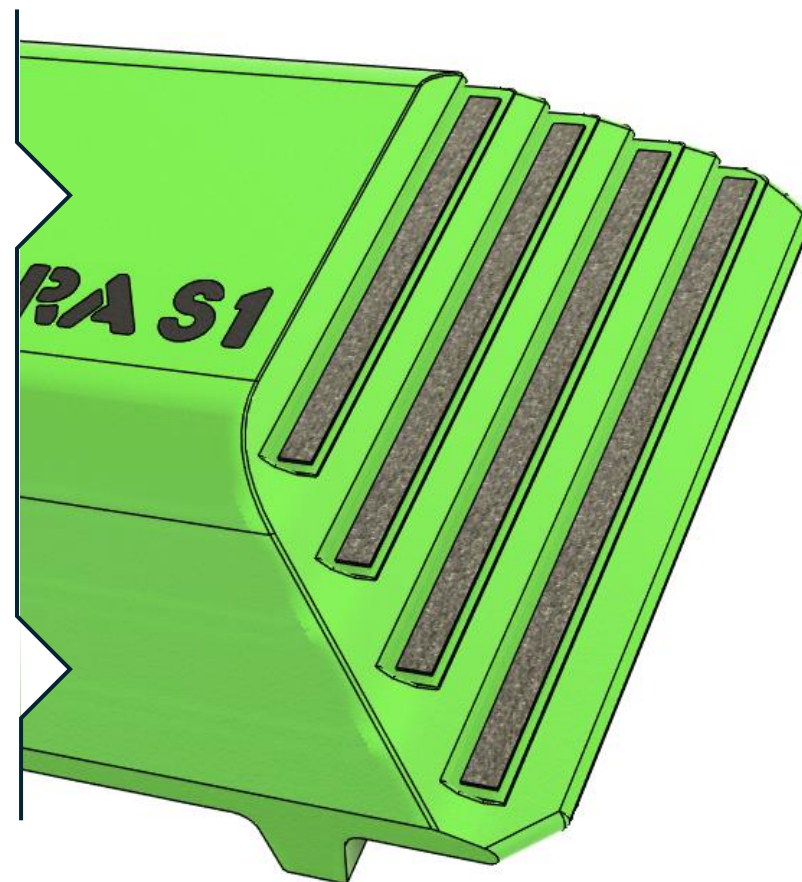


NOW IT'S TIME TO PREPARE THE MOUNTS FOR THE PRINT PLATES.

I'LL SHOW YOU HOW TO DO ONE — IF YOU PLAN TO INSTALL TWO, JUST REPEAT THE SAME STEPS FOR THE SECOND ONE.



SEE THOSE GROOVES ON THE FRONT SIDE? THAT'S WHERE YOU'LL NEED TO PLACE THE DOUBLE-SIDED FOAM TAPE — THE ONE LISTED IN THE REQUIRED MATERIALS. IF YOU NEED LINKS TO BUY IT, CHECK OUT THE MANUAL & HARDWARE PAGE ON MY WEBSITE.





M4 SCREW

3/6



Tube Connector

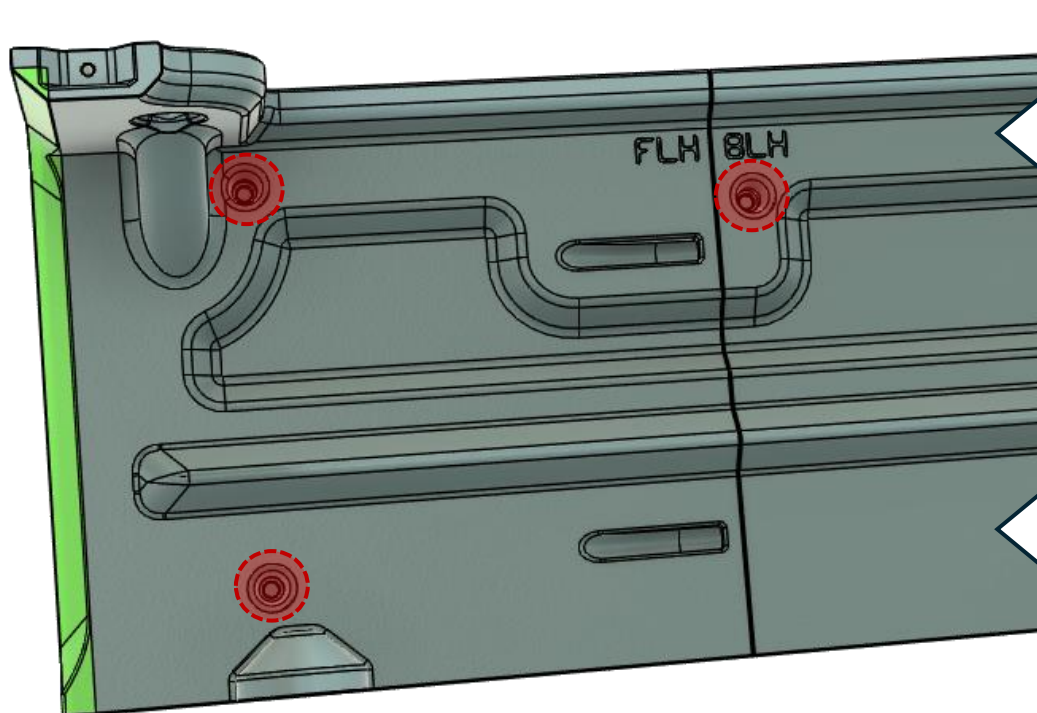
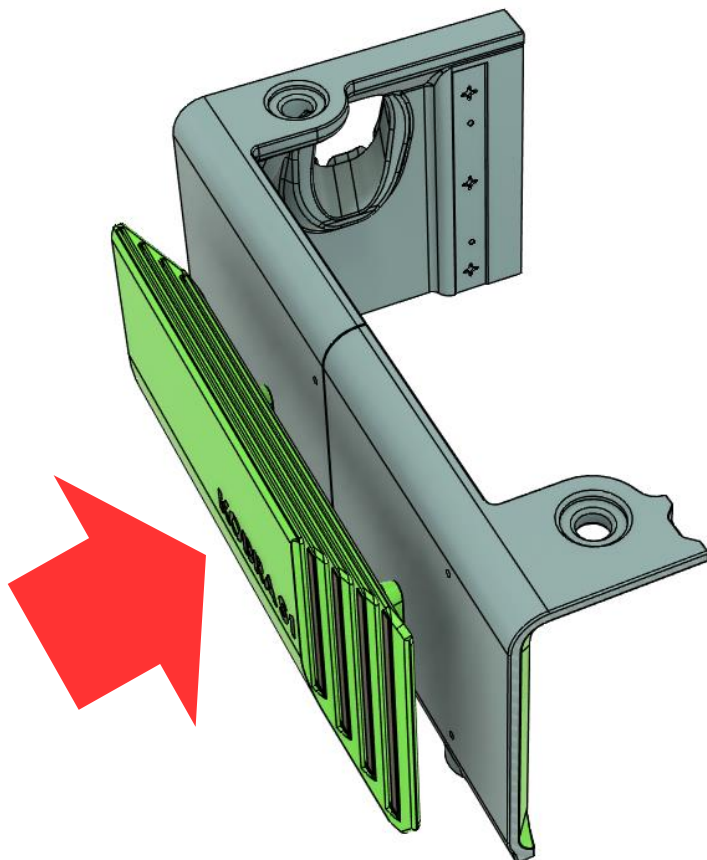
0

## PLATE HOLDER

# ANYCUBIC KOBRA S1 DRAWER



NOW LET'S GO AHEAD AND INSTALL THE PLATE HOLDER RIGHT AWAY. YOU COULD DO IT LATER, BUT IT MIGHT BE A BIT MORE AWKWARD.



TAKE THE PLATE HOLDER AND LINE IT UP WITH THE SIDE PANEL WHERE YOU DRILLED THE HOLES EARLIER. INSERT THE SCREWS AND TIGHTEN THEM TO SECURE THE HOLDER TO THE SIDE OF THE DRAWER UNIT. OF COURSE, IF YOU'RE ADDING A SECOND PLATE HOLDER ON THE OTHER SIDE, JUST REPEAT THE SAME STEPS.



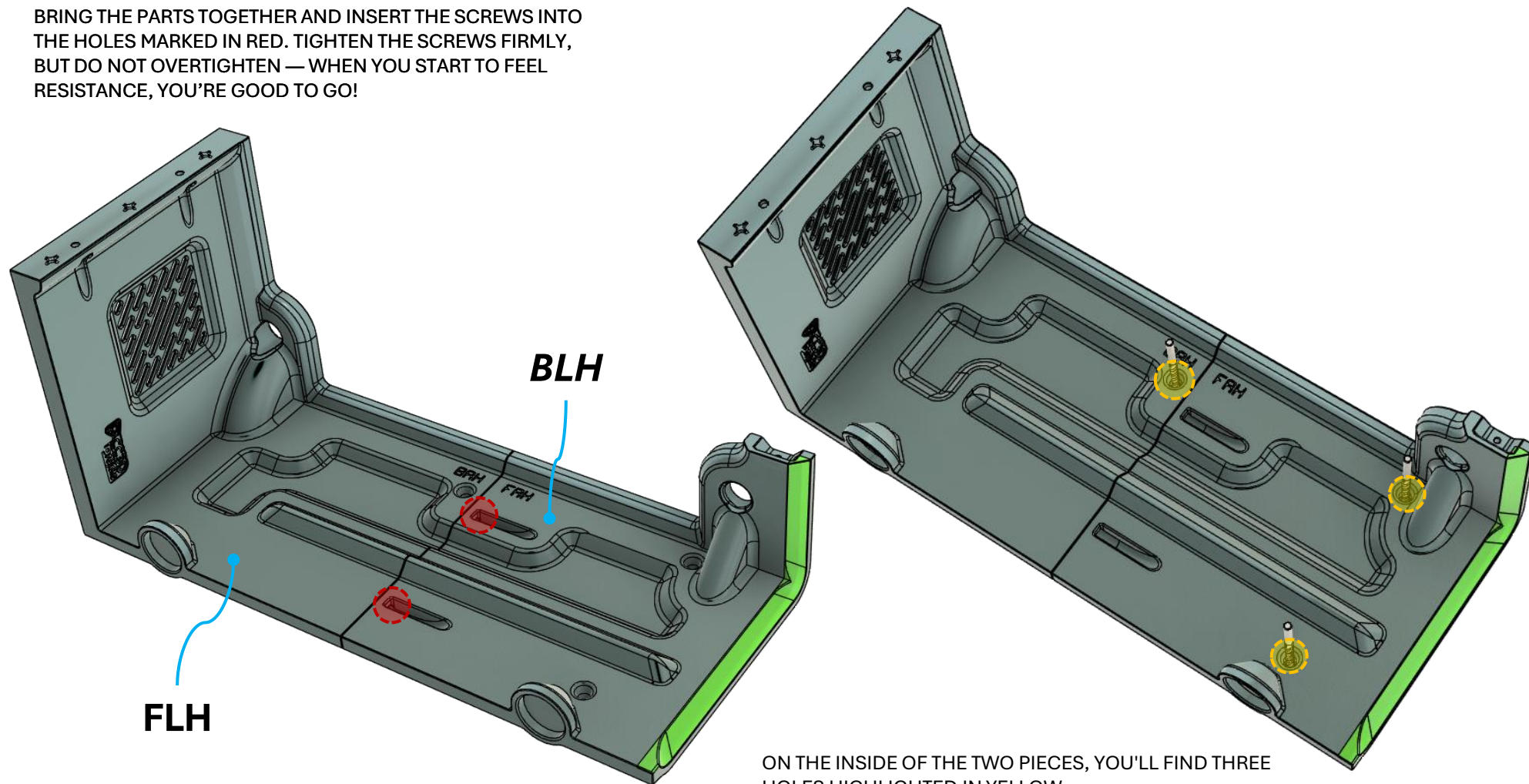


## MAIN BODY

# ANYCUBIC KOBRA S1 DRAWER



BRING THE PARTS TOGETHER AND INSERT THE SCREWS INTO THE HOLES MARKED IN RED. TIGHTEN THE SCREWS FIRMLY, BUT DO NOT OVERTIGHTEN — WHEN YOU START TO FEEL RESISTANCE, YOU'RE GOOD TO GO!



ON THE INSIDE OF THE TWO PIECES, YOU'LL FIND THREE HOLES HIGHLIGHTED IN YELLOW. THESE ARE THE ONES YOU'LL NEED TO FINISH DRILLING OUT WITH A 4.5 MM BIT IF YOU PLAN TO MOUNT THE PLATE HOLDER ON THIS SIDE OF THE DRAWER UNIT. ASK CHATGPT



M4 SCREW

2



Tube Connector

0

## MAIN BODY

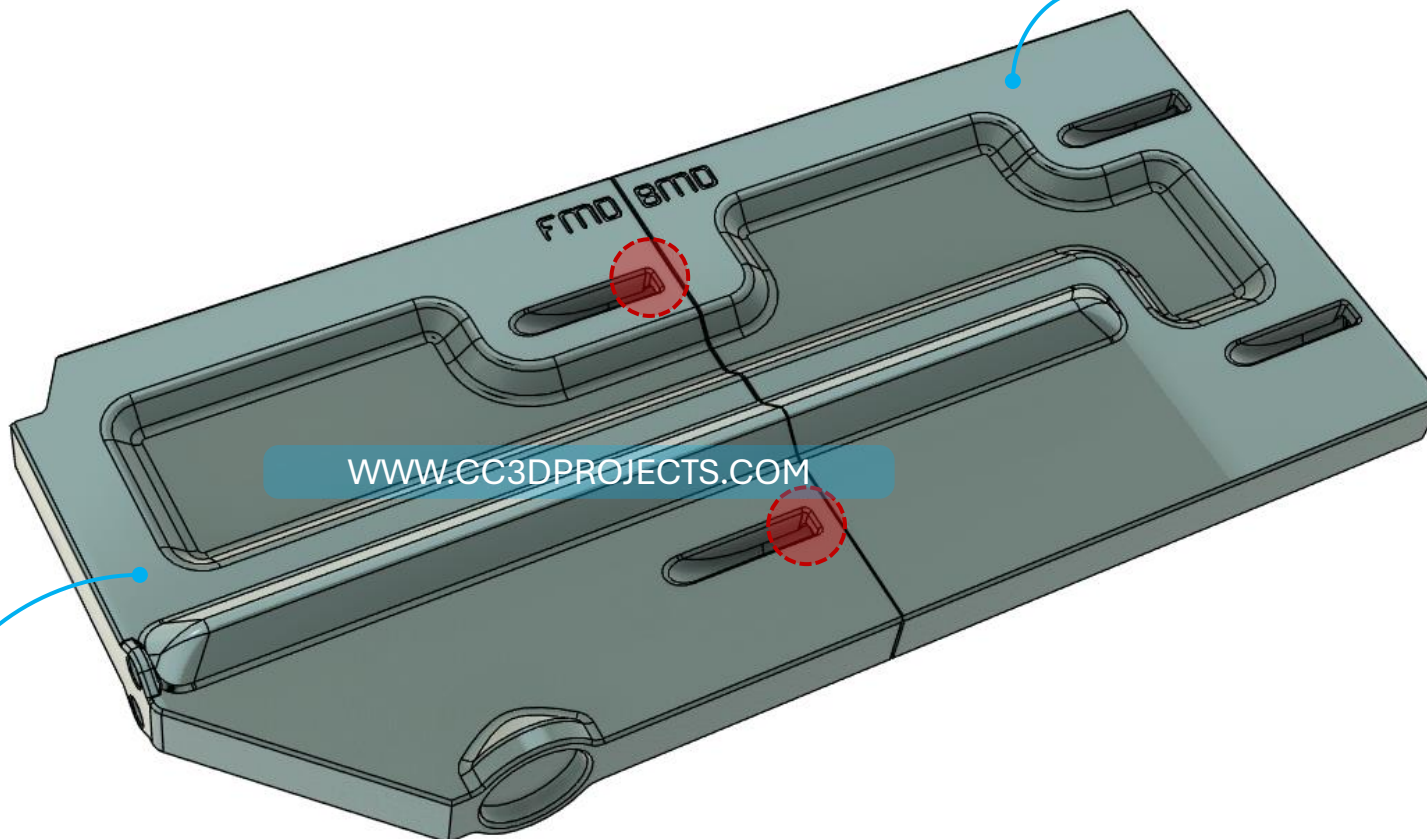
# ANYCUBIC KOBRA S1 DRAWER



BRING THE PARTS TOGETHER AND INSERT THE SCREWS INTO THE HOLES MARKED IN RED. TIGHTEN THE SCREWS FIRMLY, BUT DO NOT OVERTIGHTEN — WHEN YOU START TO FEEL RESISTANCE, YOU'RE GOOD TO GO!

**BMO**

**FMO**



WWW.CC3DPROJECTS.COM



M4 SCREW

4



Tube Connector

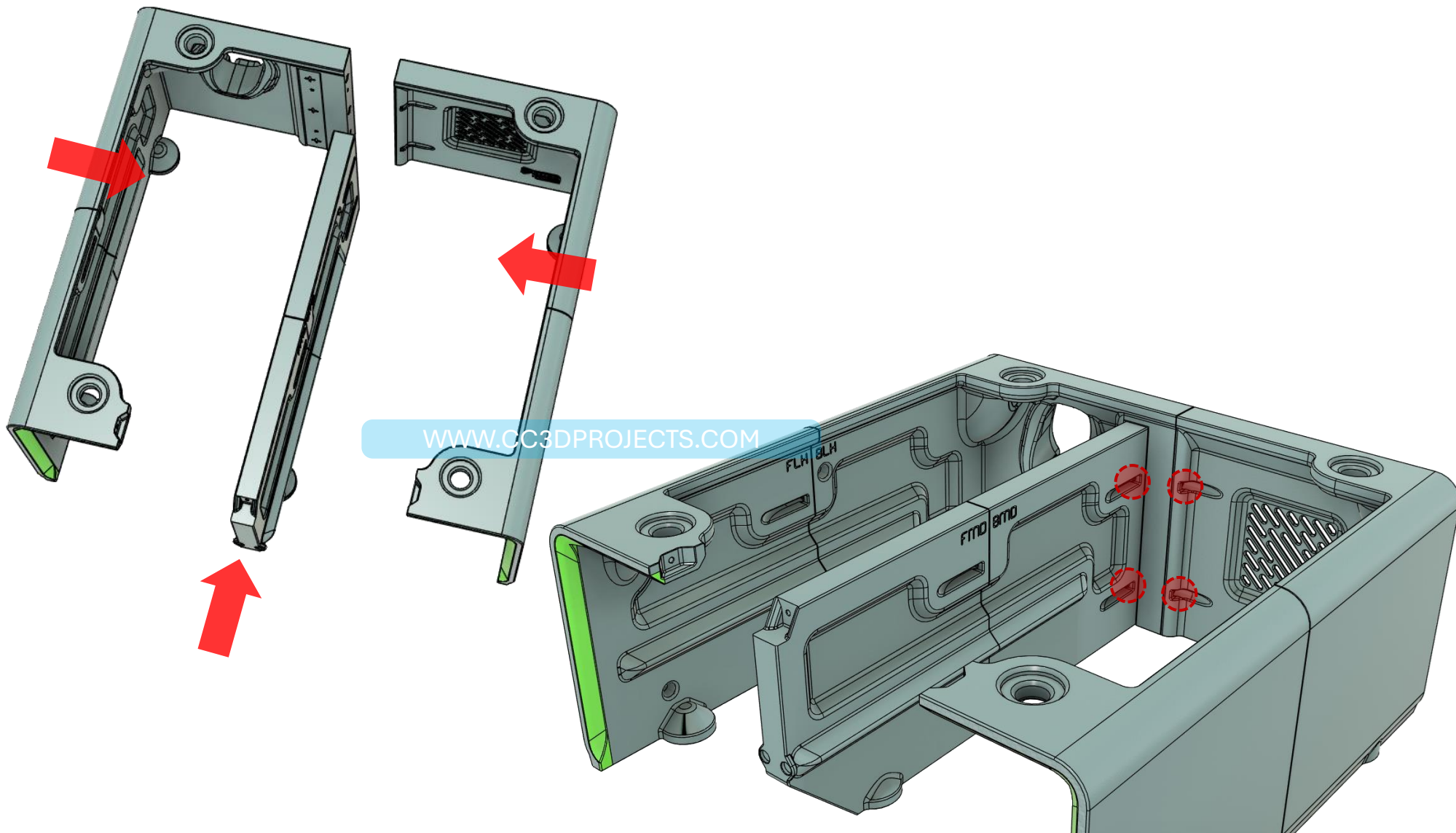
0

## MAIN BODY

# ANYCUBIC KOBRA S1 DRAWER



BRING THE PARTS TOGETHER AND INSERT THE SCREWS INTO THE HOLES MARKED IN RED. TIGHTEN THE SCREWS FIRMLY, BUT DO NOT OVERTIGHTEN — WHEN YOU START TO FEEL RESISTANCE, YOU'RE GOOD TO GO!



WWW.CC3DPROJECTS.COM





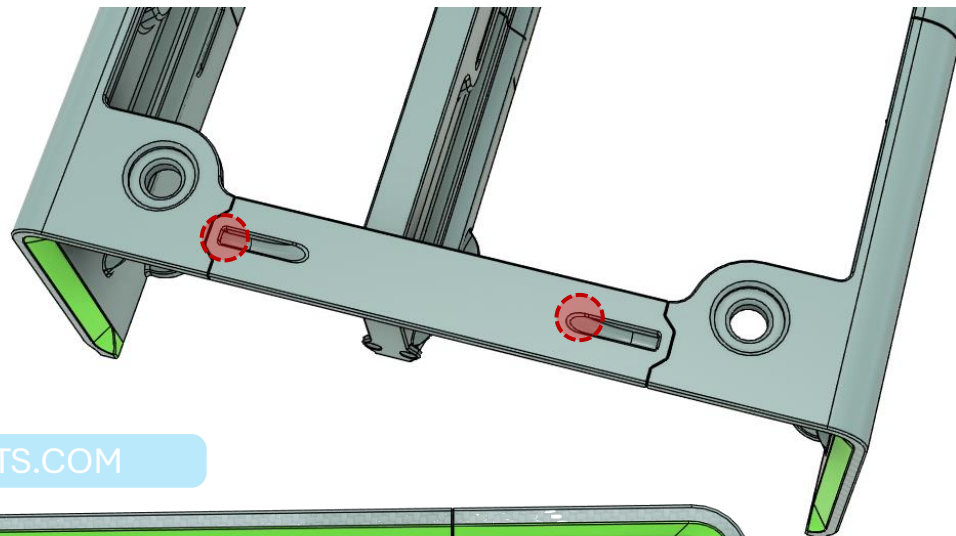
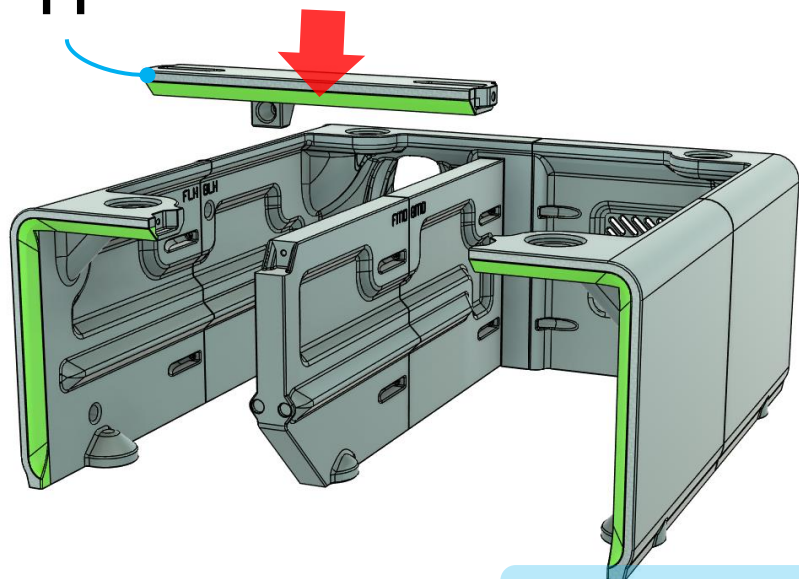
## MAIN BODY

# ANYCUBIC KOBRA S1 DRAWER



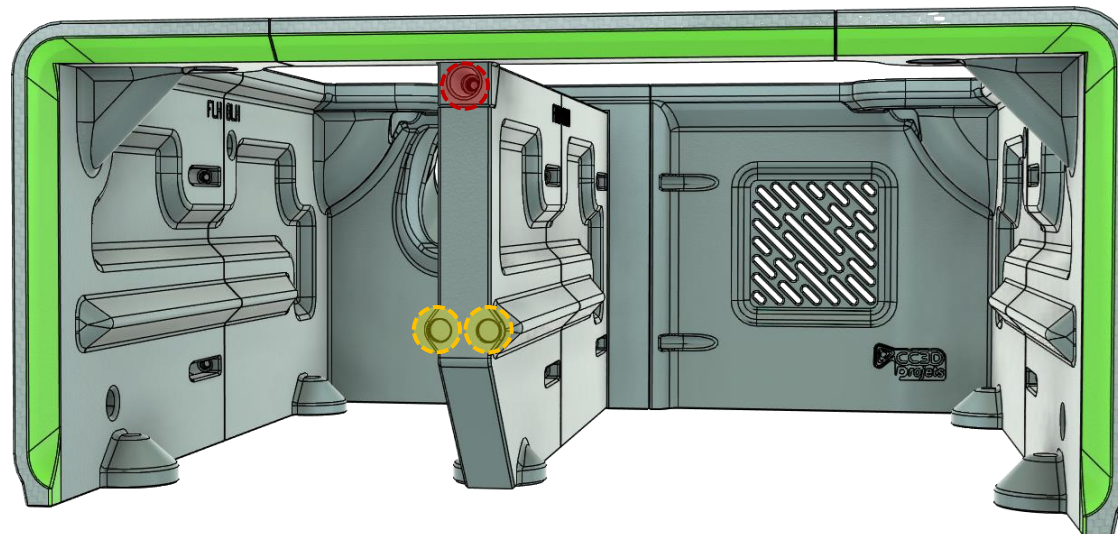
BRING THE PARTS TOGETHER AND INSERT THE SCREWS INTO THE HOLES MARKED IN RED. TIGHTEN THE SCREWS FIRMLY, BUT DO NOT OVERTIGHTEN — WHEN YOU START TO FEEL RESISTANCE, YOU'RE GOOD TO GO!

FT



[WWW.CC3DPROJECTS.COM](http://WWW.CC3DPROJECTS.COM)

USE **MAGNET INSTALLER A**, AVAILABLE FOR FREE ON MY SHOP, TO GLUE THE MAGNETS INTO THE HOLES MARKED IN YELLOW.







M4 SCREW

4



Tube Connector

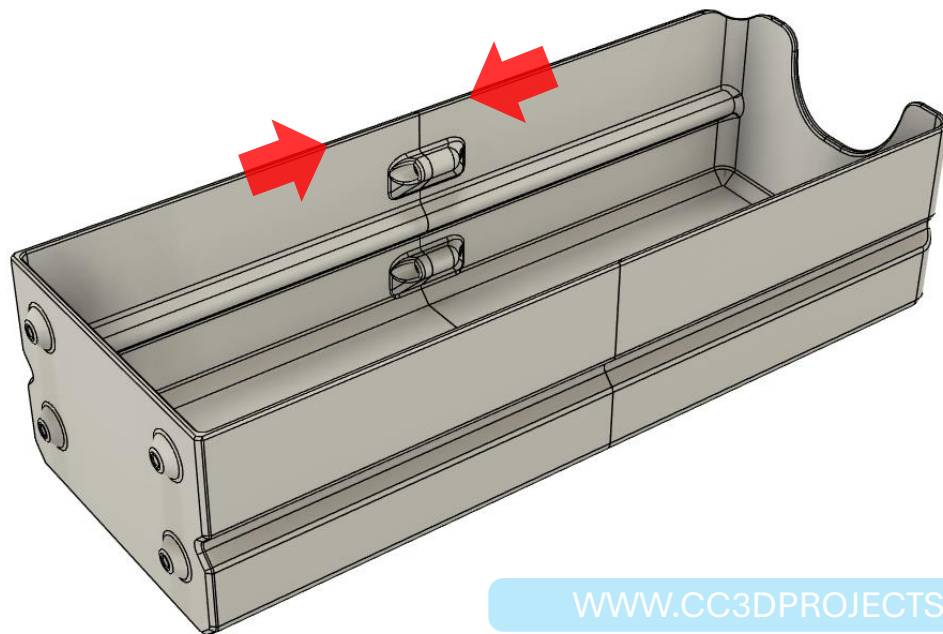
0

## POOP DRAWER

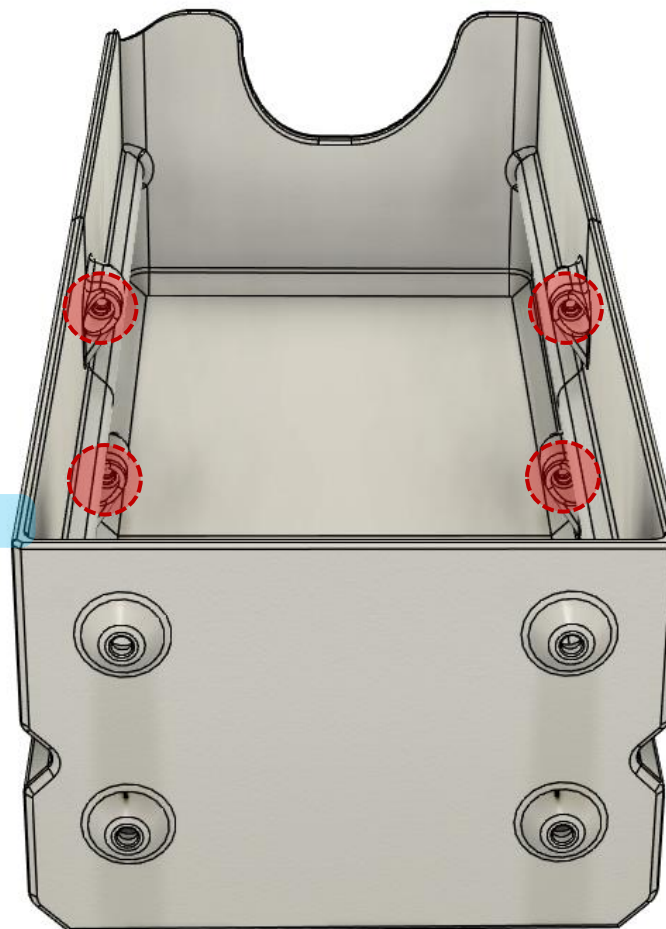
## ANYCUBIC KOBRA S1 DRAWER



BRING THE PARTS TOGETHER AND INSERT THE SCREWS INTO THE HOLES MARKED IN RED. TIGHTEN THE SCREWS FIRMLY, BUT DO NOT OVERTIGHTEN — WHEN YOU START TO FEEL RESISTANCE, YOU'RE GOOD TO GO!



[WWW.CC3DPROJECTS.COM](http://WWW.CC3DPROJECTS.COM)





M4 SCREW

4



Tube Connector

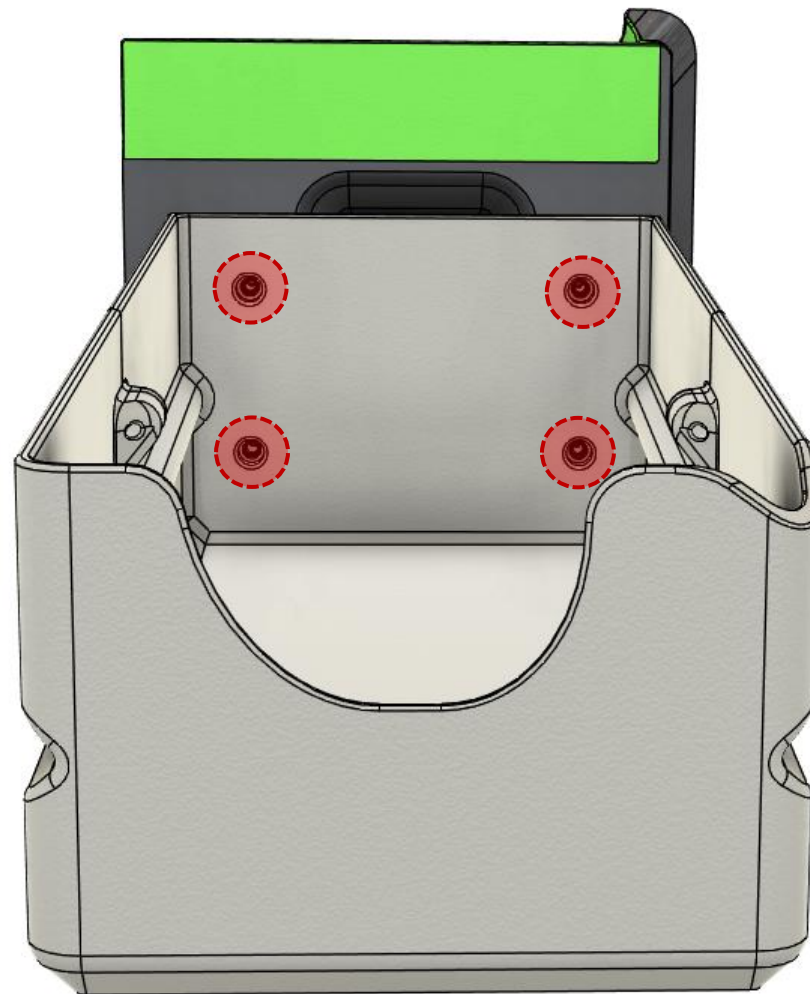
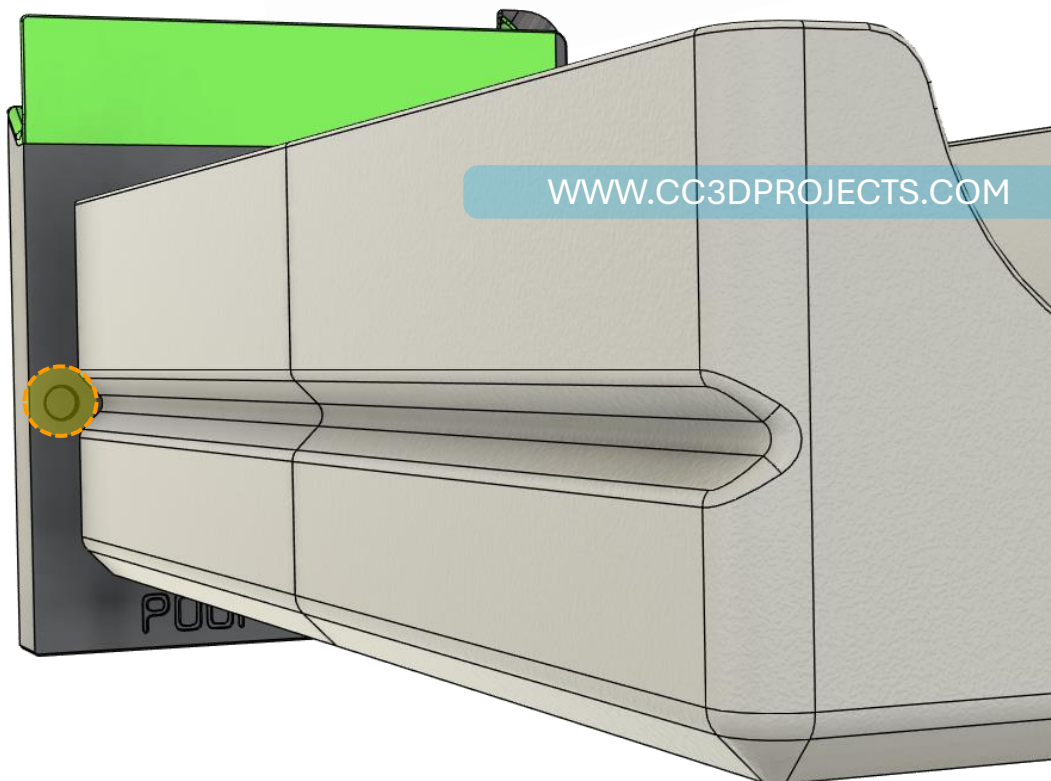
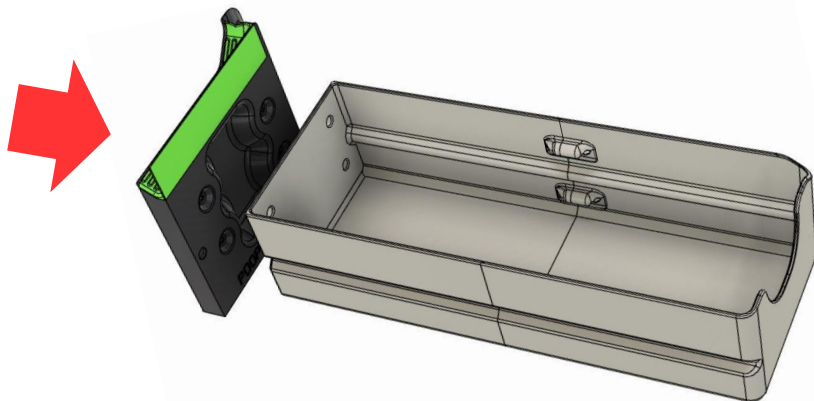
1

## POOP DRAWER

## ANYCUBIC KOBRA S1 DRAWER



BRING THE PARTS TOGETHER AND INSERT THE SCREWS INTO THE HOLES MARKED IN RED. TIGHTEN THE SCREWS FIRMLY, BUT DO NOT OVERTIGHTEN — WHEN YOU START TO FEEL RESISTANCE, YOU'RE GOOD TO GO!



USE **MAGNET INSTALLER B**, AVAILABLE FOR FREE ON MY SHOP, TO GLUE THE MAGNETS INTO THE HOLES MARKED IN YELLOW.



M4 SCREW

0



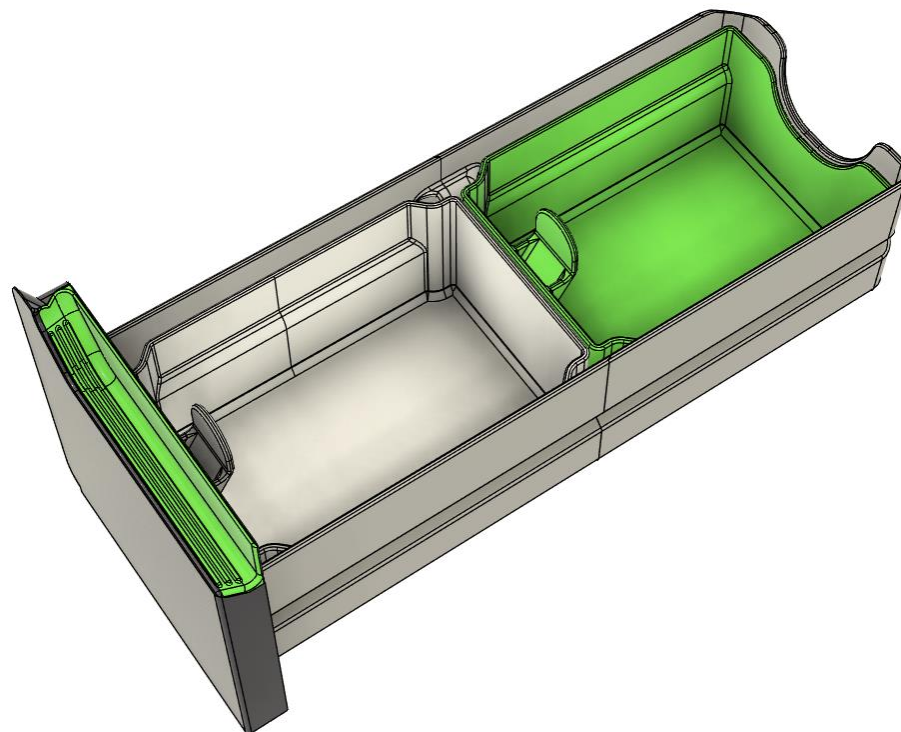
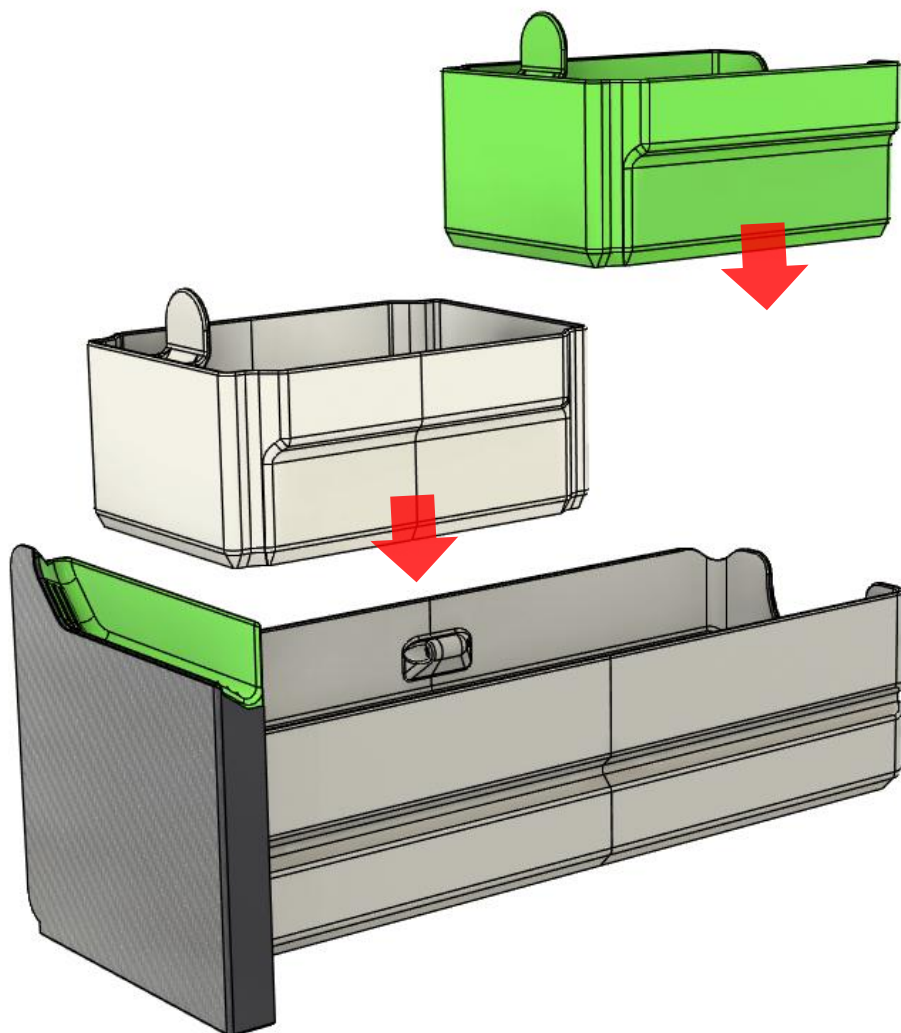
Tube Connector

0

## POOP DRAWER

NOW LINE UP THE BOXES IN THE DRAWER — JUST MAKE SURE THE ONE WITH THE NOTCH GOES IN THE BACK SLOT OF THE DRAWER.

## ANYCUBIC KOBRA S1 DRAWER







M4 SCREW

4



Tube Connector

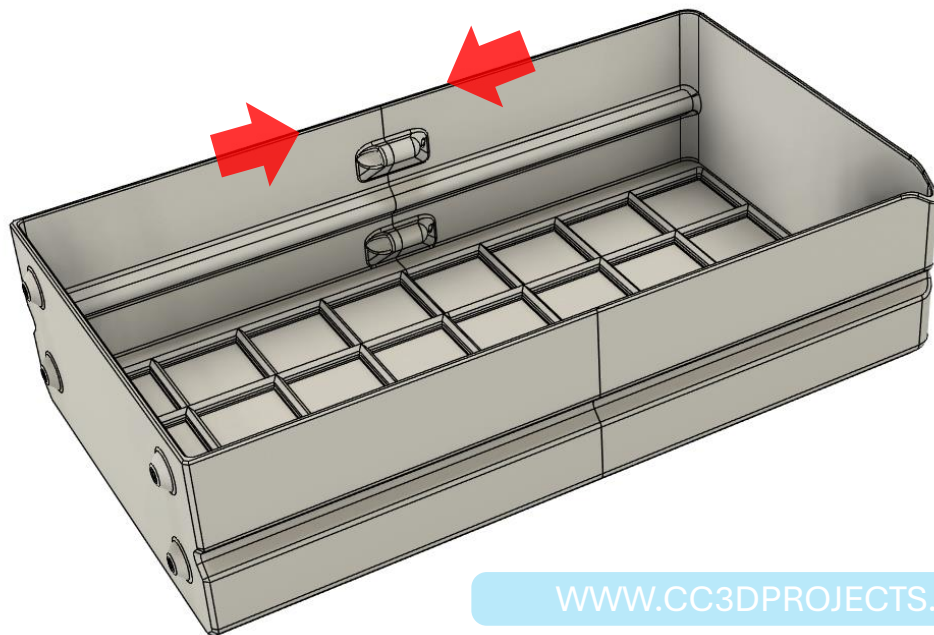
0

## TOOL DRAWER

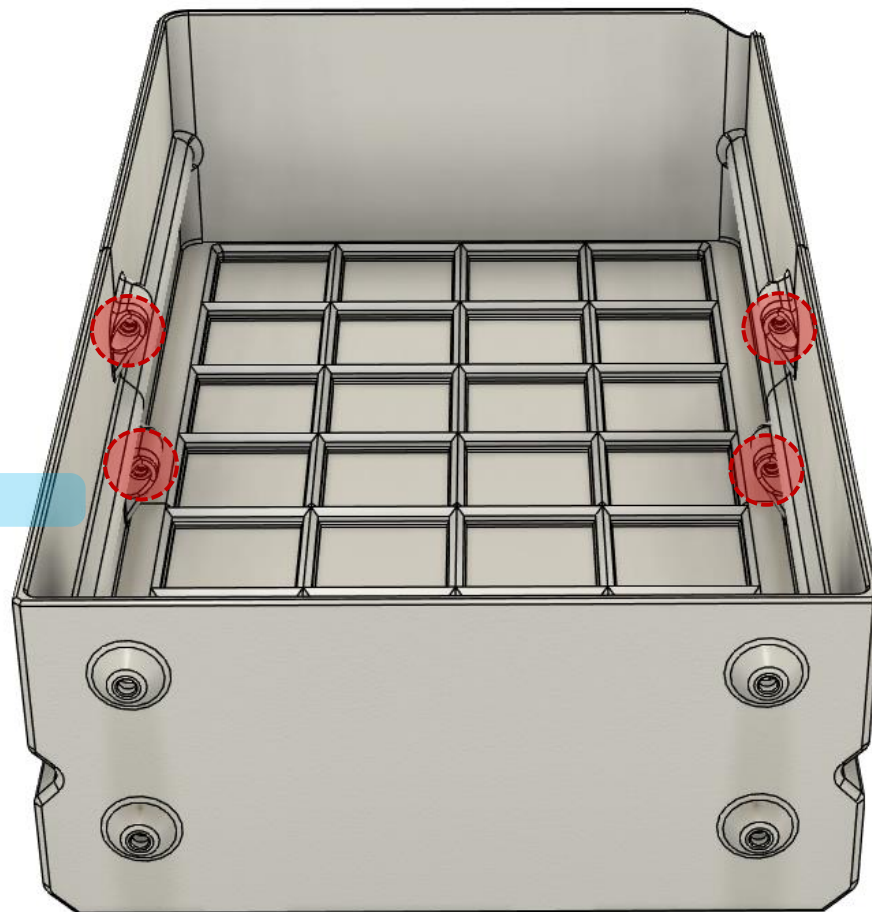
## ANYCUBIC KOBRA S1 DRAWER



BRING THE PARTS TOGETHER AND INSERT THE SCREWS INTO THE HOLES MARKED IN RED. TIGHTEN THE SCREWS FIRMLY, BUT DO NOT OVERTIGHTEN — WHEN YOU START TO FEEL RESISTANCE, YOU'RE GOOD TO GO!



[WWW.CC3DPROJECTS.COM](http://WWW.CC3DPROJECTS.COM)





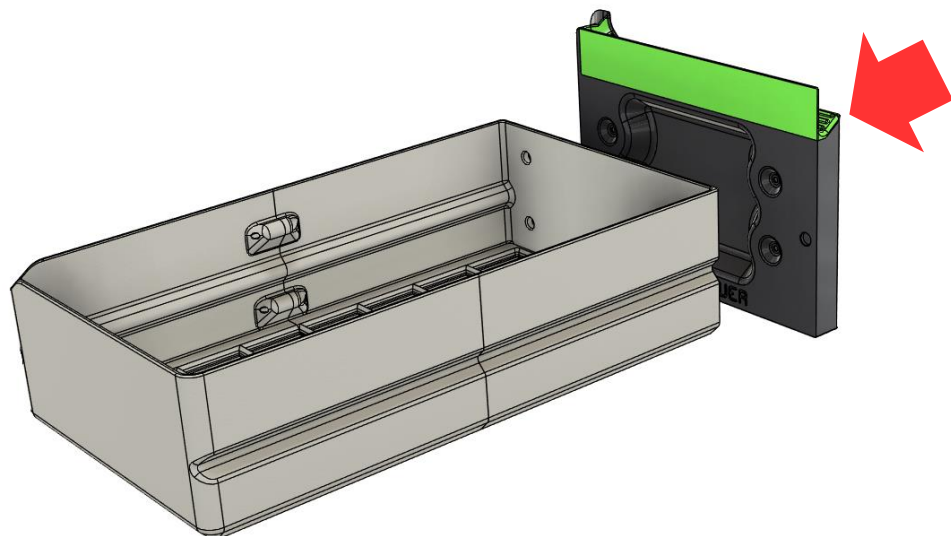


## TOOL DRAWER

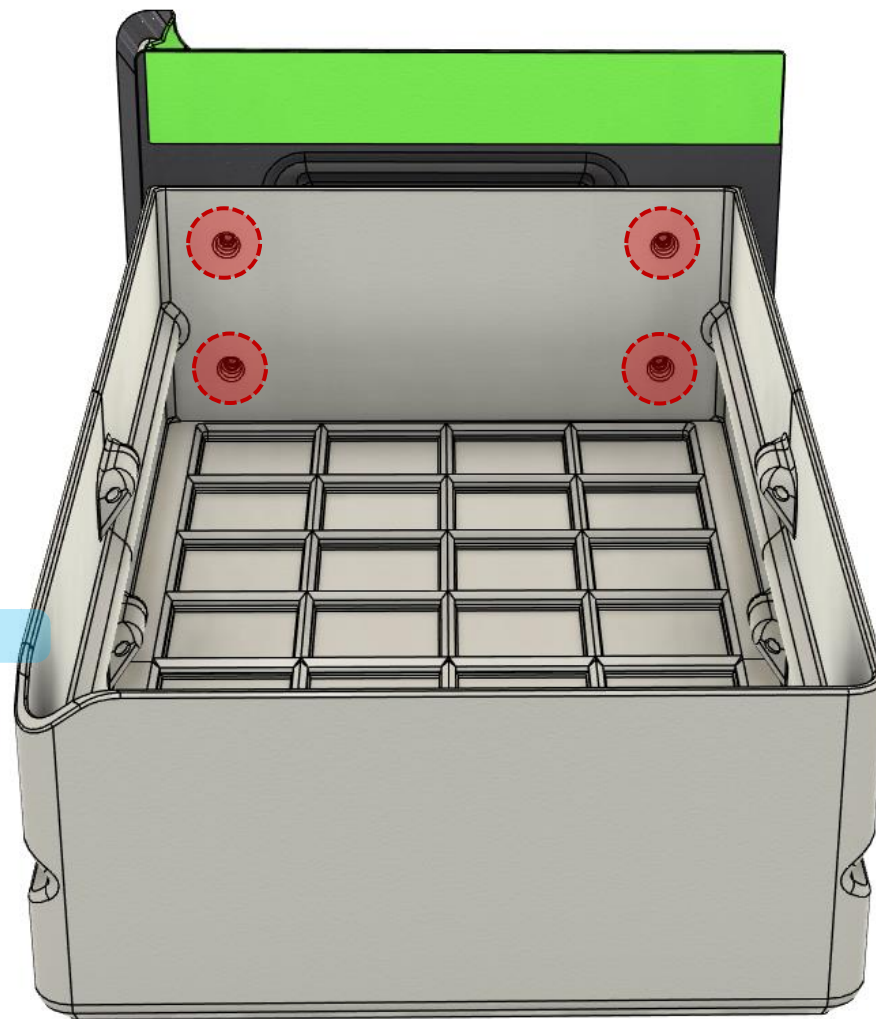
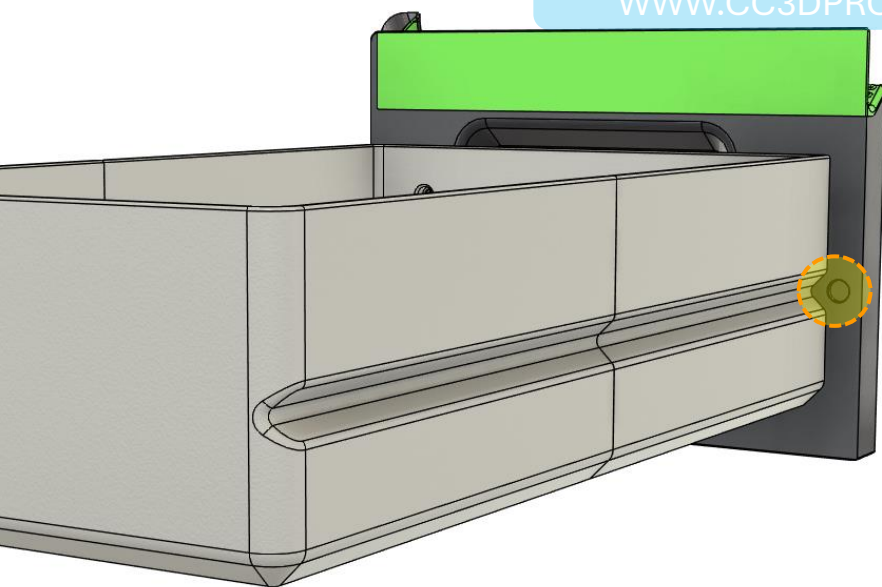
## ANYCUBIC KOBRA S1 DRAWER



BRING THE PARTS TOGETHER AND INSERT THE SCREWS INTO THE HOLES MARKED IN RED. TIGHTEN THE SCREWS FIRMLY, BUT DO NOT OVERTIGHTEN — WHEN YOU START TO FEEL RESISTANCE, YOU'RE GOOD TO GO!



[WWW.CC3DPROJECTS.COM](http://WWW.CC3DPROJECTS.COM)



USE **MAGNET INSTALLER B**, AVAILABLE FOR FREE ON MY SHOP, TO GLUE THE MAGNETS INTO THE HOLES MARKED IN YELLOW.



M4 SCREW

0



Tube Connector

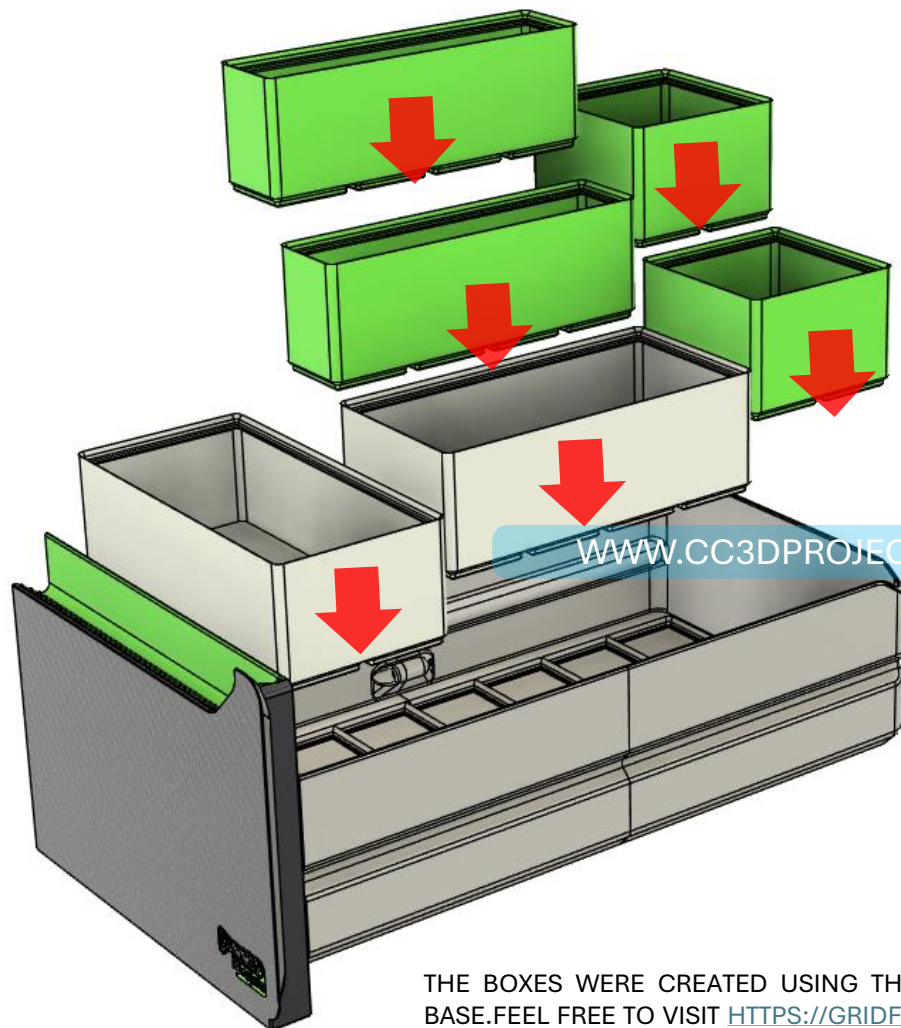
0

## TOOL DRAWER

## ANYCUBIC KOBRA S1 DRAWER



INSERT THE INNER BOXES AND ARRANGE THEM HOWEVER YOU LIKE — FIND THE SETUP THAT WORKS BEST FOR YOU.ASK CHATGPT



WWW.CC3DPROJECTS.COM



THE BOXES WERE CREATED USING THE GRIDFINITY TOOL AND FEATURE A 42x42 MM BASE.FEEL FREE TO VISIT [HTTPS://GRIDFINITYGENERATOR.COM/EN/BOX](https://gridfinitygenerator.com/en/box) TO DESIGN YOUR OWN!ASK CHATGPT





M4 SCREW

0



Tube Connector

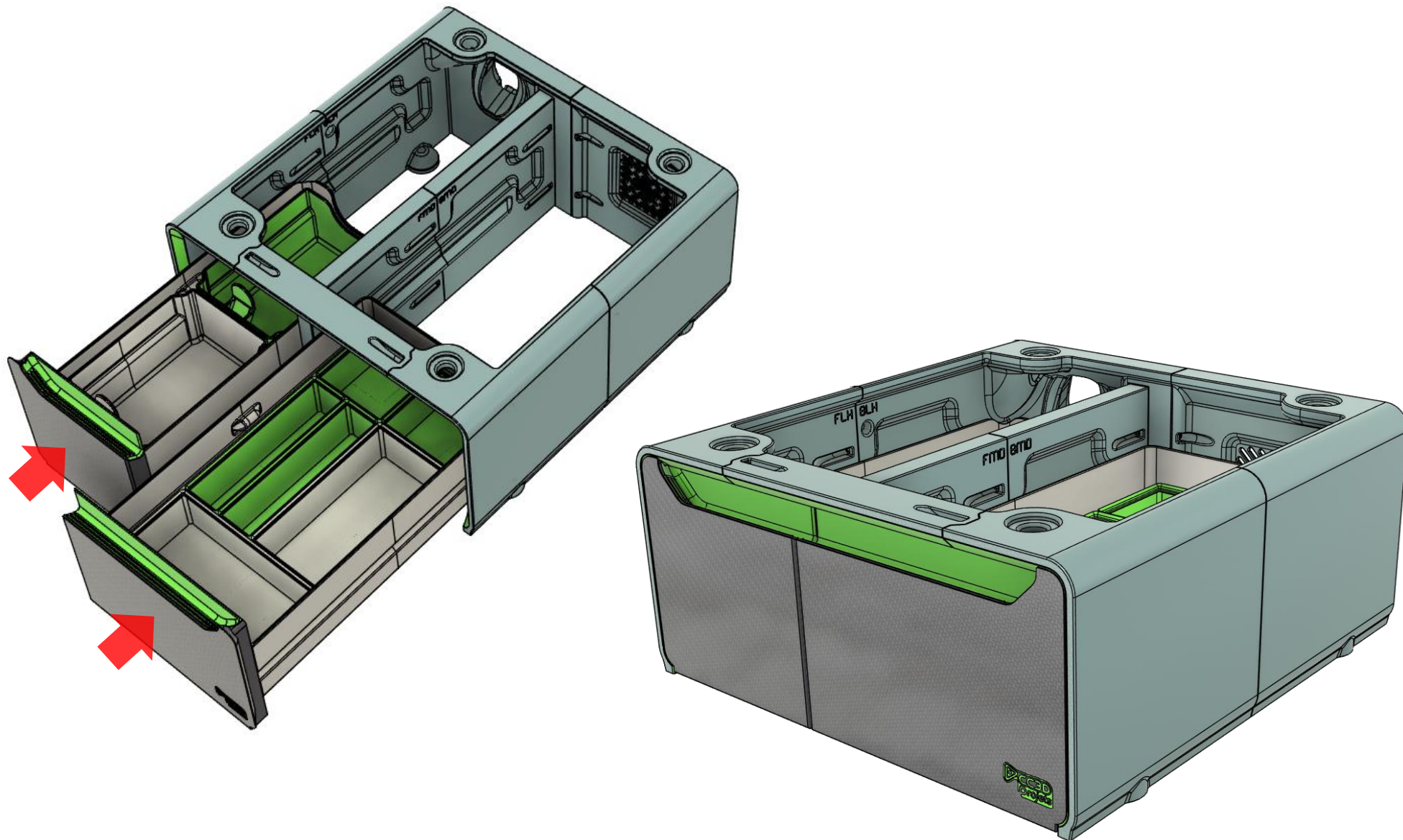
0

## DRAWER INSTALLATION

# ANYCUBIC KOBRA S1 DRAWER



ONCE THE DRAWERS ARE FINISHED, IT'S TIME TO INSERT THEM — JUST MAKE SURE YOU DON'T MIX THEM UP, LOLIPOOP DRAWER GOES ON THE LEFT, AND TOOL DRAWER ON THE RIGHT.





M4 SCREW

0



Tube Connector

0

## PIPE INSTALLATION

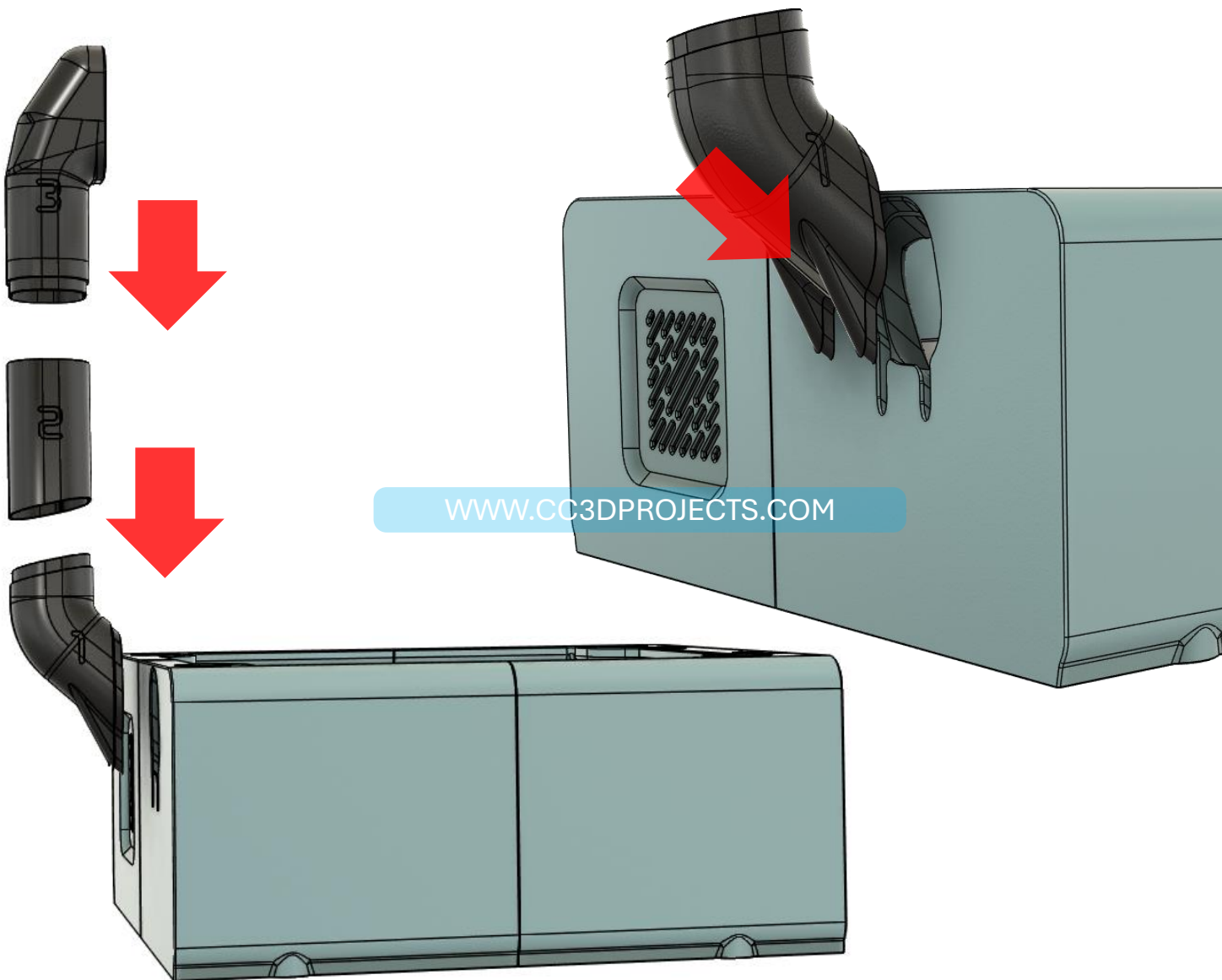
# ANYCUBIC KOBRA S1 DRAWER



INSERT SEGMENT 1 INTO THE DRAWER — IT SHOULD SNAP INTO PLACE AND HOLD FIRMLY.

IF IT FEELS LOOSE, JUST USE A SMALL DROP OF QUICK GLUE TO SECURE IT.

NEXT, GO AHEAD AND INSERT SEGMENTS 2 AND 3. THESE SHOULD FIT TIGHTLY, SO YOU LIKELY WON'T NEED ANY GLUE FOR THEM.







M4 SCREW

0



Tube Connector

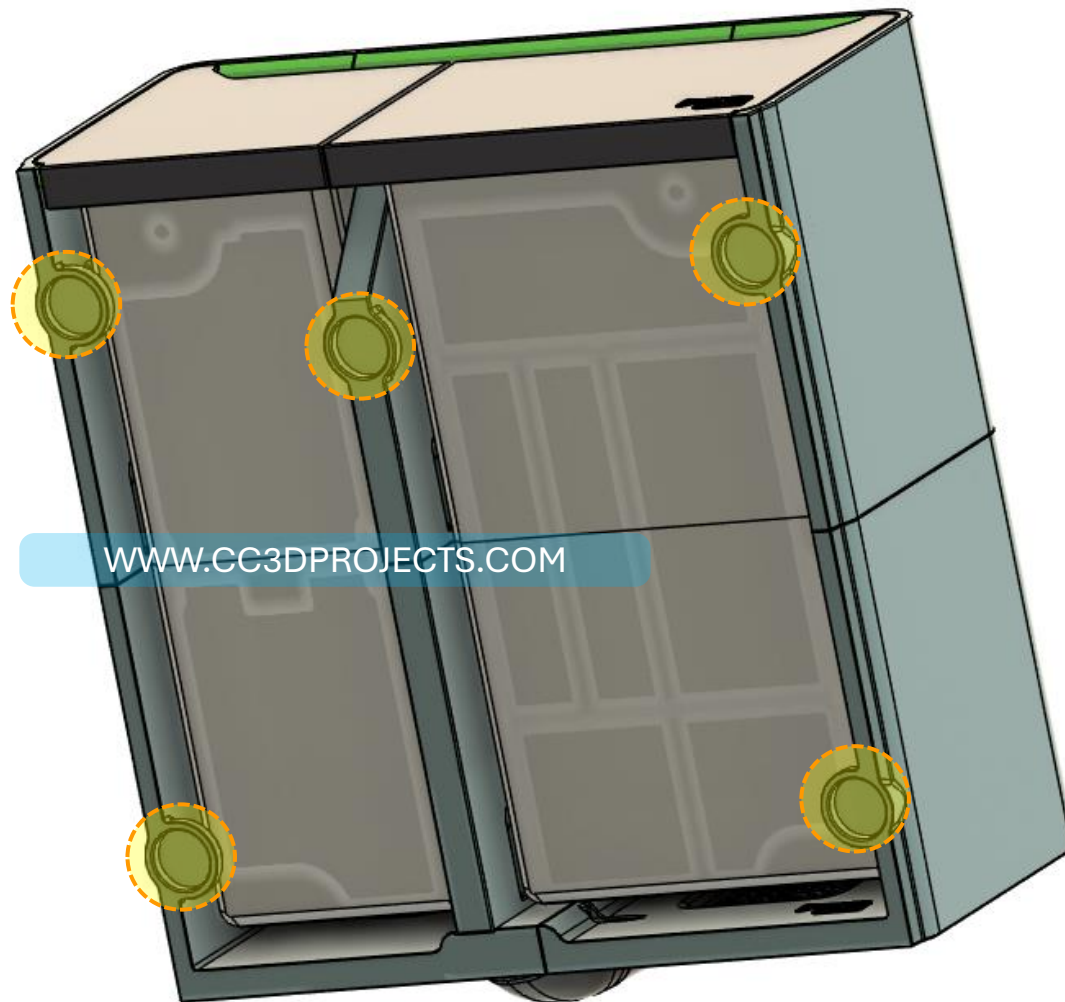
0

## HULA FEET INSTALLATION

## ANYCUBIC KOBRA S1 DRAWER



I'VE MARKED THE HOLES WHERE THE HULAS SHOULD BE INSERTED — YOU'LL NEED 5 OF THEM. IF YOU PREFER NOT TO USE THEM, YOU CAN REPLACE THEM WITH SIMPLE DOUBLE-SIDED SILICONE BUMPERS. FOR EXAMPLE, I USE 8 MM SEMI-SPHERICAL ONES.



WWW.CC3DPROJECTS.COM



M4 SCREW

0



Tube Connector

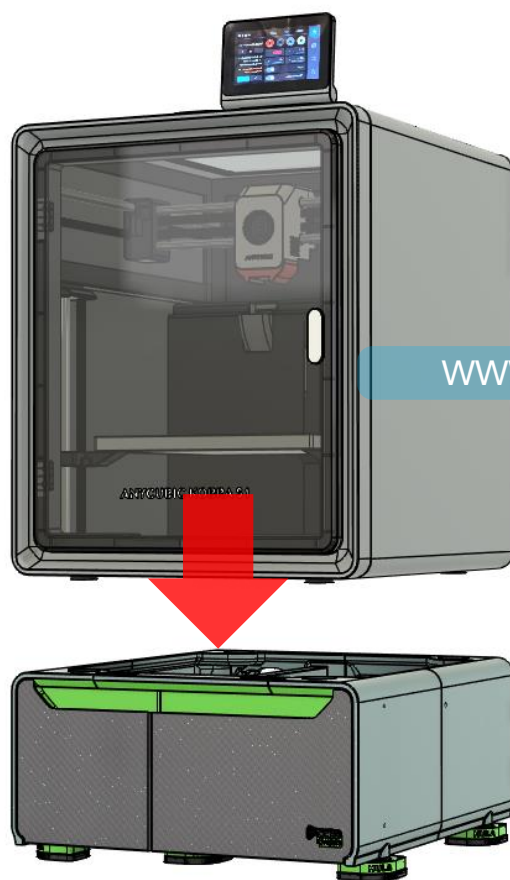
0

## FINAL STEP

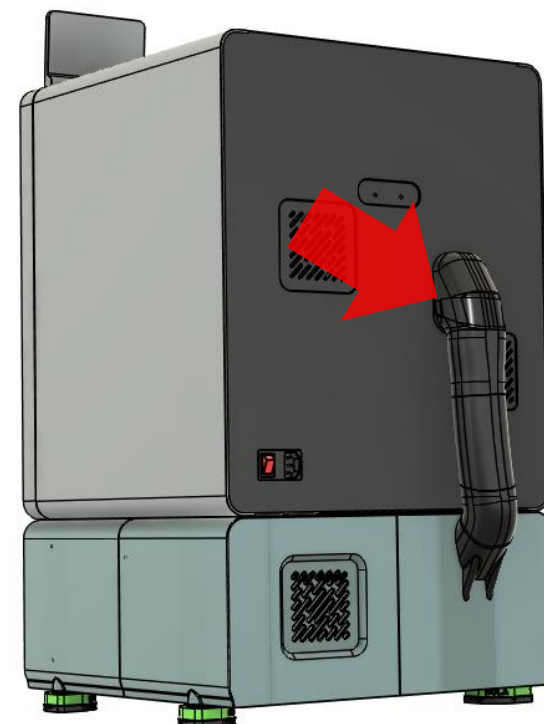
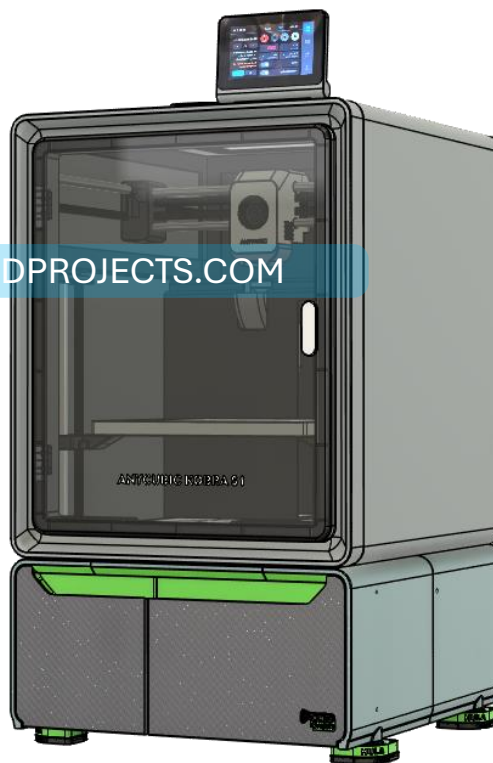
# ANYCUBIC KOBRA S1 DRAWER



NOW COMES THE DELICATE PART — PLACING THE PRINTER ON THE DRAWER. I RECOMMEND REMOVING THE REAR PIPE TO MAKE THE PROCESS EASIER, AND OF COURSE, GET SOMEONE TO HELP YOU OUT SO YOU DON'T STRAIN YOUR PRECIOUS BACK. PLUS, LET'S BE HONEST — DOING IT TOGETHER IS WAY MORE FUN! ASK CHATGPT



WWW.CC3DPROJECTS.COM





*Thanks for sticking with me through this assembly guide!*

*It took me hours to put this guide together, and I truly hope it's been clear and easy to follow.*

*If there's anything that wasn't super clear or if you feel like something's missing, don't hesitate to reach out.*

*I'm always here to help and provide any support or clarification you need.*

*enjoy your new FEATURE!*

**Ciao!!!**



[WWW.CC3DPROJECTS.COM](http://WWW.CC3DPROJECTS.COM)



© 2025 CC3DPROJECTS. ALL RIGHTS RESERVED.

THIS MANUAL IS PROTECTED BY COPYRIGHT LAW AND MAY NOT BE REPRODUCED, DISTRIBUTED, OR USED IN WHOLE OR IN PART WITHOUT THE WRITTEN PERMISSION OF THE AUTHOR OR PUBLISHER. ANY VIOLATION WILL BE PROSECUTED TO THE FULLEST EXTENT OF THE LAW.

THE ANYCUBIC KOBRA S1 DRAWER AND ALL ITS COMPONENTS, INCLUDING BUT NOT LIMITED TO DESIGNS, SCHEMATICS, ASSEMBLY INSTRUCTIONS, AND PHOTOGRAPHS, ARE THE EXCLUSIVE PROPERTY OF ENRICO MAZZAROL AND ARE PROTECTED BY COPYRIGHT LAW AND OTHER INTELLECTUAL PROPERTY LAWS.

COPYING, DISTRIBUTING, MODIFYING, REPRODUCING, TRANSMITTING, OR USING THE HDRI SYSTEM IN ANY FORM WITHOUT THE WRITTEN PERMISSION OF CC3DPROJECTS IS PROHIBITED.

FOR USAGE REQUESTS, PERMISSIONS, OR OTHER INQUIRIES, PLEASE CONTACT [CC3DPROJECT@GMAIL.COM](mailto:CC3DPROJECT@GMAIL.COM).